

Recombinant Human MBL2/MBL/COLEC1 Protein

Catalog Number:PKSH031629



Note: Centrifuge before opening to ensure complete recovery of vial contents.

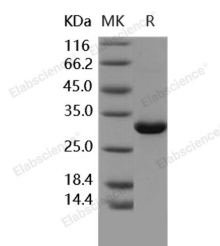
Description

Synonyms	Mannose-Binding Protein C;MBP-C;Collectin-1;MBP1;Mannan-Binding Protein;Mannose-Binding Lectin;MBL2;MBL;COLEC1;HSMBPC;MBL;MBL2D;MBP;MBP1;MBPD
Species	Human
Expression Host	CHO Stable Cells
Sequence	Met 1-Ile 248
Accession	NP_000233.1
Calculated Molecular Weight	24 kDa
Observed molecular weight	31 kDa
Tag	None

Properties

Purity	> 95 % as determined by reducing SDS-PAGE.
Endotoxin	< 1.0 EU per µg of the protein as determined by the LAL method.
Storage	Generally, lyophilized proteins are stable for up to 12 months when stored at -20 to -80°C. Reconstituted protein solution can be stored at 4-8°C for 2-7 days. Aliquots of reconstituted samples are stable at < -20°C for 3 months.
Shipping	This product is provided as lyophilized powder which is shipped with ice packs.
Formulation	Lyophilized from sterile PBS, pH 7.4 Normally 5 % - 8 % trehalose, mannitol and 0.01 % Tween80 are added as protectants before lyophilization. Please refer to the specific buffer information in the printed manual.
Reconstitution	Please refer to the printed manual for detailed information.

Data



> 95 % as determined by reducing SDS-PAGE.

Background

MBL (mannose-binding lectin) is primarily a liver-derived collagen-like serum protein, which binds sugar structures on micro-organisms and on dying host cells and is one of the four known mediators that initiate activation of the complement system via the lectin pathway. MBL and the ficolins (Ficolin-1, Ficolin-2 and Ficolin-3) are soluble collagen-like proteins that are involved in innate immune defence. They bind sugar structures or acetylated compounds present on microorganisms and on dying host cells and they initiate activation of the lectin complement pathway in varying degrees. MBL2 encodes the mannose-binding lectin, which is a key player in the innate immune system and has recently been

For Research Use Only

A Reliable Research Partner in Life Science and Medicine

Toll-free: 1-888-852-8623

Web: www.elabscience.com

Tel: 1-832-243-6086

Email: techsupport@elabscience.com

Fax: 1-832-243-6017

Recombinant Human MBL2/MBL/COLEC1 Protein

Catalog Number:PKSH031629



found to play a role in development of type 1 diabetes and gestational diabetes mellitus. Common variant alleles situated both in promoter and structural regions of the MBL2 gene influence the stability and the serum concentration of the protein. Several polymorphisms in the promoter and structural regions of MBL2 adversely affect the plasma concentration and oligomeric state of MBL. The possession of mutant alleles has been linked to disease outcome for a variety of bacterial and viral infections. Mutant MBL2 haplotypes have been linked to disease progression and response to therapy in HCV infection.

For Research Use Only

A Reliable Research Partner in Life Science and Medicine

Toll-free: 1-888-852-8623

Tel: 1-832-243-6086

Fax: 1-832-243-6017

Web: www.elabscience.com

Email: techsupport@elabscience.com