

Recombinant Human PRLR/Prolactin Receptor Protein (His Tag)

Catalog Number:PKSH031713

Note: Centrifuge before opening to ensure complete recovery of vial contents.

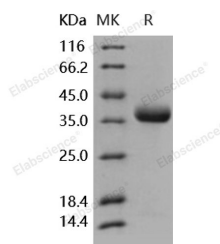
Description

Synonyms	HPRL;hPRLrI;MFAB;PRLR
Species	Human
Expression Host	HEK293 Cells
Sequence	Met 1-Asp 234
Accession	NP_000940.1
Calculated Molecular Weight	26 kDa
Observed molecular weight	36-38 kDa
Tag	C-His

Properties

Purity	> 98 % as determined by reducing SDS-PAGE.
Endotoxin	< 1.0 EU per µg of the protein as determined by the LAL method.
Storage	Generally, lyophilized proteins are stable for up to 12 months when stored at -20 to -80°C. Reconstituted protein solution can be stored at 4-8°C for 2-7 days. Aliquots of reconstituted samples are stable at < -20°C for 3 months.
Shipping	This product is provided as lyophilized powder which is shipped with ice packs.
Formulation	Lyophilized from sterile PBS, pH 7.4 Normally 5 % - 8 % trehalose, mannitol and 0.01 % Tween80 are added as protectants before lyophilization. Please refer to the specific buffer information in the printed manual.
Reconstitution	Please refer to the printed manual for detailed information.

Data



> 98 % as determined by reducing SDS-PAGE.

Background

Prolactin receptor (PRLR) is a single-pass transmembrane receptor belonging to the type I cytokine receptor superfamily, and contains two fibronectin type-III domains. All class 1 ligands activate their respective receptors by clustering mechanisms. Ligand binding results in the transmembrane PRLR dimerization, followed by phosphorylation and activation of the molecules involved in the signaling pathways, such as Jak-STAT, Ras/Raf/MAPK. The PRLR contains no intrinsic tyrosine kinase cytoplasmic domain but associates with a cytoplasmic tyrosine kinase, JAK2. PRLR mainly serves as the receptor for the pituitary hormone prolactin (PRL), a secreted hormone that affects reproduction and homeostasis in vertebrates. PRLR can be regulated by an interplay of two different mechanisms, PRL or ovarian steroid hormones independently or in combination in a tissue-specific manner. The role of the hormone prolactin (PRL) in the

For Research Use Only

A Reliable Research Partner in Life Science and Medicine

Toll-free: 1-888-852-8623

Web: www.elabscience.com

Tel: 1-832-243-6086

Email: techsupport@elabscience.com

Fax: 1-832-243-6017

Recombinant Human PRLR/Prolactin Receptor Protein (His Tag)



Catalog Number:PKSH031713

pathogenesis of breast cancer is mediated by its cognate receptor (PRLR). Ubiquitin-dependent degradation of the PRLR that negatively regulates PRL signaling is triggered by PRL-mediated phosphorylation of PRLR on Ser349 followed by the recruitment of the beta-transducin repeats-containing protein (beta-TrCP) ubiquitin-protein isopeptide ligase. which altered PRLR stability may directly influence the pathogenesis of breast cancer.

For Research Use Only

A Reliable Research Partner in Life Science and Medicine

Toll-free: 1-888-852-8623

Web: www.elabscience.com

Tel: 1-832-243-6086

Email: techsupport@elabscience.com

Fax: 1-832-243-6017