

# Recombinant Human EphB6 Protein (His Tag)

Catalog Number:PKSH031774



**Note:** Centrifuge before opening to ensure complete recovery of vial contents.

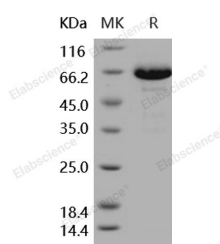
## Description

<b>Synonyms</b>	HEP
<b>Species</b>	Human
<b>Expression Host</b>	HEK293 Cells
<b>Sequence</b>	Met 1-Ser 579
<b>Accession</b>	NP_004436.1
<b>Calculated Molecular Weight</b>	61.6 kDa
<b>Observed molecular weight</b>	60-70 kDa
<b>Tag</b>	C-His
<b>Bioactivity</b>	1. Immobilized recombinant human EphB6 at 10 µg/ml (100 µl/well) can bind human EphrinB1 with a linear range of 32-800 ng/ml. 2. Immobilized recombinant human EphB6 at 10 µg/ml (100 µl/well) can bind human EphrinB2 with a linear range of 1. 28-32 ng/ml.

## Properties

<b>Purity</b>	> 92 % as determined by reducing SDS-PAGE.
<b>Endotoxin</b>	< 1.0 EU per µg of the protein as determined by the LAL method.
<b>Storage</b>	Generally, lyophilized proteins are stable for up to 12 months when stored at -20 to -80°C. Reconstituted protein solution can be stored at 4-8°C for 2-7 days. Aliquots of reconstituted samples are stable at < -20°C for 3 months.
<b>Shipping</b>	This product is provided as lyophilized powder which is shipped with ice packs.
<b>Formulation</b>	Lyophilized from sterile PBS, pH 7.4 Normally 5 % - 8 % trehalose, mannitol and 0.01% Tween80 are added as protectants before lyophilization. Please refer to the specific buffer information in the printed manual.
<b>Reconstitution</b>	Please refer to the printed manual for detailed information.

## Data



> 92 % as determined by reducing SDS-PAGE.

## Background

Ephrins are divided into the ephrin-A (EFNA) class and the ephrin-B (EFNB) class based on their structures and sequence relationships. Ephrin receptors make up the largest subgroup of the receptor tyrosine kinase (RTK) family. EphB6 is an unusual Eph receptor; lacking catalytic capacity due to alterations in its kinase domain. Interestingly; increased metastatic activity is associated with reduced EphB6 receptor expression in several tumor types; including breast cancer. This

## For Research Use Only

A Reliable Research Partner in Life Science and Medicine

Toll-free: 1-888-852-8623

Web: [www.elabscience.com](http://www.elabscience.com)

Tel: 1-832-243-6086

Email: [techsupport@elabscience.com](mailto:techsupport@elabscience.com)

Fax: 1-832-243-6017

# Recombinant Human EphB6 Protein (His Tag)

Catalog Number:PKSH031774



emphasizes the potential of EphB6 to act as a suppressor of cancer aggressiveness. EphB6 suppress cancer invasiveness through c-Cbl-dependent signaling; morphologic changes; and cell attachment and indicate that EphB6 may represent a useful prognostic marker and a promising target for therapeutic approaches. EphB6 can both positively and negatively regulate cell adhesion and migration; and suggest that tyrosine phosphorylation of the receptor by an Src family kinase acts as the molecular switch for the functional transition. In addition; Ephrin-B2 may be a physiological ligand for the EphB6 receptor.

---

## For Research Use Only

A Reliable Research Partner in Life Science and Medicine

Toll-free: 1-888-852-8623

Tel: 1-832-243-6086

Fax: 1-832-243-6017

Web: [www.elabscience.com](http://www.elabscience.com)

Email: [techsupport@elabscience.com](mailto:techsupport@elabscience.com)