

# Recombinant Human ANPEP/CD13 Protein (603 Met/Ile, His Tag)



Catalog Number:PKSH031912

**Note:** Centrifuge before opening to ensure complete recovery of vial contents.

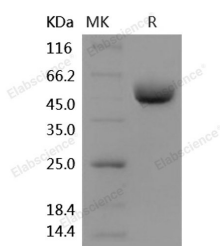
## Description

<b>Synonyms</b>	APN;CD13;GP150;LAP1;P150;PEPN
<b>Species</b>	Human
<b>Expression Host</b>	HEK293 Cells
<b>Sequence</b>	Lys 69-Lys 967-603 Met/Ile
<b>Accession</b>	NP_001141.2
<b>Calculated Molecular Weight</b>	104.2 kDa
<b>Observed molecular weight</b>	135-140 kDa
<b>Tag</b>	C-His
<b>Bioactivity</b>	Measured by its ability to cleave the fluorogenic peptide substrate, Ala-7-amido-4-methylcoumarin (Ala-AMC). The specific activity is > 2, 500 pmoles/min/μg.

## Properties

<b>Purity</b>	> 97 % as determined by reducing SDS-PAGE.
<b>Endotoxin</b>	< 1.0 EU per μg of the protein as determined by the LAL method.
<b>Storage</b>	Generally, lyophilized proteins are stable for up to 12 months when stored at -20 to -80°C. Reconstituted protein solution can be stored at 4-8°C for 2-7 days. Aliquots of reconstituted samples are stable at < -20°C for 3 months.
<b>Shipping</b>	This product is provided as lyophilized powder which is shipped with ice packs.
<b>Formulation</b>	Lyophilized from sterile PBS, pH 7.3 Normally 5 % - 8 % trehalose, mannitol and 0.01% Tween80 are added as protectants before lyophilization. Please refer to the specific buffer information in the printed manual.
<b>Reconstitution</b>	Please refer to the printed manual for detailed information.

## Data



> 97 % as determined by reducing SDS-PAGE.

## Background

Aminopeptidase N (ANPEP or APN), also known as CD13, is a cell-surface metalloprotease located in the small-intestinal and renal microvillar membrane, as well as other plasma membranes. It belongs to the peptidase M1 family. CD13 plays a role in the final digestion of peptides generated from hydrolysis of proteins by gastric and pancreatic proteases and is involved in the metabolism of regulatory peptides by diverse cell types. CD13/APN is a potent regulator of angiogenesis which is essential for tumor invasion and metastasis, and its transcription in activated endothelial cells is

## For Research Use Only

A Reliable Research Partner in Life Science and Medicine

Toll-free: 1-888-852-8623

Web: [www.elabscience.com](http://www.elabscience.com)

Tel: 1-832-243-6086

Email: [techsupport@elabscience.com](mailto:techsupport@elabscience.com)

Fax: 1-832-243-6017

# Recombinant Human ANPEP/CD13 Protein (603 Met/Ile, His Tag)



Catalog Number:PKSH031912

---

induced by angiogenic growth factors via the RAS/MAPK pathway. In addition, this enzyme has been shown to participate in antigen processing and presentation, and accordingly, defects in this gene appear to be a cause of various types of leukemia or lymphoma and carcinomas.

---

## For Research Use Only

A Reliable Research Partner in Life Science and Medicine

Toll-free: 1-888-852-8623

Web: [www.elabscience.com](http://www.elabscience.com)

Tel: 1-832-243-6086

Email: [techsupport@elabscience.com](mailto:techsupport@elabscience.com)

Fax: 1-832-243-6017