

# Recombinant Human VCL/Vinculin Protein (His Tag)

Catalog Number:PKSH031929



**Note:** Centrifuge before opening to ensure complete recovery of vial contents.

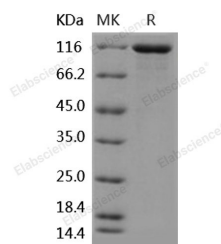
## Description

<b>Synonyms</b>	Vinculin;Metavinculin;VCL;CMD1W;CMH15;HEL114;MV;MVCL
<b>Species</b>	Human
<b>Expression Host</b>	HEK293 Cells
<b>Sequence</b>	Met 1-Gln 1066
<b>Accession</b>	P18206-2
<b>Calculated Molecular Weight</b>	118 kDa
<b>Observed molecular weight</b>	115 kDa
<b>Tag</b>	C-His

## Properties

<b>Purity</b>	> 90 % as determined by reducing SDS-PAGE.
<b>Endotoxin</b>	< 1.0 EU per µg of the protein as determined by the LAL method.
<b>Storage</b>	Generally, lyophilized proteins are stable for up to 12 months when stored at -20 to -80°C. Reconstituted protein solution can be stored at 4-8°C for 2-7 days. Aliquots of reconstituted samples are stable at < -20°C for 3 months.
<b>Shipping</b>	This product is provided as lyophilized powder which is shipped with ice packs.
<b>Formulation</b>	Lyophilized from sterile PBS, pH 7.4 Normally 5 % - 8 % trehalose, mannitol and 0.01 % Tween80 are added as protectants before lyophilization. Please refer to the specific buffer information in the printed manual.
<b>Reconstitution</b>	Please refer to the printed manual for detailed information.

## Data



> 90 % as determined by reducing SDS-PAGE.

## Background

Vinculin (VCL) is a cytoskeletal protein that is closely related to both cell-matrix interactions and cell-cell junctions. VCL is a membrane-cytoskeletal protein in focal adhesion plaques that is involved in linkage of integrin adhesion molecules to the actin cytoskeleton. The protein contains an acidic N-terminal domain and a basic C-terminal domain separated by a proline-rich middle segment. This protein has multi-ligand properties and has been found to interact with a number of microfilament associated proteins, such as talin,  $\alpha$ -actinin, and paxillin, which reportedly bind to either the head or tail domains of vinculin.

## For Research Use Only

A Reliable Research Partner in Life Science and Medicine

Toll-free: 1-888-852-8623

Web: [www.elabscience.com](http://www.elabscience.com)

Tel: 1-832-243-6086

Email: [techsupport@elabscience.com](mailto:techsupport@elabscience.com)

Fax: 1-832-243-6017