

# Recombinant Human beta Amylase/AMY2 Protein (Fc Tag)



Catalog Number:PKSH031979

**Note:** Centrifuge before opening to ensure complete recovery of vial contents.

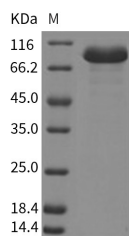
## Description

<b>Synonyms</b>	Alpha-amylase 2B;1,4-alpha-D-glucan glucanohydrolase 2B;Carcinoid alpha-amylase;HXA;AMY2;AMY3
<b>Species</b>	Human
<b>Expression Host</b>	HEK293 Cells
<b>Sequence</b>	Met 1-Leu511
<b>Accession</b>	NP_066188.1
<b>Calculated Molecular Weight</b>	82.4 kDa
<b>Tag</b>	C-hFc

## Properties

<b>Purity</b>	> 95 % as determined by reducing SDS-PAGE.
<b>Endotoxin</b>	< 1.0 EU per $\mu\text{g}$ of the protein as determined by the LAL method.
<b>Storage</b>	Generally, lyophilized proteins are stable for up to 12 months when stored at -20 to -80°C. Reconstituted protein solution can be stored at 4-8°C for 2-7 days. Aliquots of reconstituted samples are stable at < -20°C for 3 months.
<b>Shipping</b>	This product is provided as lyophilized powder which is shipped with ice packs.
<b>Formulation</b>	Lyophilized from sterile PBS, pH 7.4. Normally 5 % - 8 % trehalose, mannitol and 0.01% Tween80 are added as protectants before lyophilization. Please refer to the specific buffer information in the printed manual.
<b>Reconstitution</b>	Please refer to the printed manual for detailed information.

## Data



> 95 % as determined by reducing SDS-PAGE.

## Background

Amylases are secreted proteins that hydrolyze 1;4-alpha-glucoside bonds in oligosaccharides and polysaccharides; and thus catalyze the first step in digestion of dietary starch and glycogen. Alpha-amylase is the major form of amylase found in humans and other mammals. Alpha-amylase hydrolyses alpha bonds of large; alpha-linked polysaccharides; such as starch and glycogen; yielding glucose and maltose. Amylases is widely expressed and is most prominent in pancreatic juice and saliva; each of which has its own isoform of human  $\alpha$ -amylase. They behave differently on isoelectric focusing; and can also be separated in testing by using specific monoclonal antibodies.

## For Research Use Only

A Reliable Research Partner in Life Science and Medicine

Toll-free: 1-888-852-8623

Web: [www.elabscience.com](http://www.elabscience.com)

Tel: 1-832-243-6086

Email: [techsupport@elabscience.com](mailto:techsupport@elabscience.com)

Fax: 1-832-243-6017