

# Recombinant Human/Mouse/Rat/Rhesus/Canine BMP-2 Protein (Fc Tag)



Catalog Number:PKSH031985

**Note:** Centrifuge before opening to ensure complete recovery of vial contents.

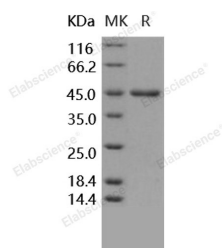
## Description

<b>Synonyms</b>	BDA2;BDA2A;BMP-2;BMP2A;BMP2
<b>Species</b>	Human
<b>Expression Host</b>	HEK293 Cells
<b>Sequence</b>	Gln 283-Arg 396
<b>Accession</b>	NP_001191.1
<b>Calculated Molecular Weight</b>	39.5 kDa
<b>Tag</b>	C-hFc
<b>Bioactivity</b>	Measured by its ability to bind recombinant human Nog-Fc, human ALK3-Fch, mouse ALK3-Fch, human BMPR-II-Fc in functional ELISA.

## Properties

<b>Purity</b>	> 95 % as determined by reducing SDS-PAGE.
<b>Endotoxin</b>	< 1.0 EU per µg of the protein as determined by the LAL method.
<b>Storage</b>	Generally, lyophilized proteins are stable for up to 12 months when stored at -20 to -80°C. Reconstituted protein solution can be stored at 4-8°C for 2-7 days. Aliquots of reconstituted samples are stable at < -20°C for 3 months.
<b>Shipping</b>	This product is provided as lyophilized powder which is shipped with ice packs.
<b>Formulation</b>	Lyophilized from sterile 100mM Glycine, 10mM NaCl, 50mM Tris, pH 7.5 Normally 5 % - 8 % trehalose, mannitol and 0.01 % Tween80 are added as protectants before lyophilization. Please refer to the specific buffer information in the printed manual.
<b>Reconstitution</b>	Please refer to the printed manual for detailed information.

## Data



> 95 % as determined by reducing SDS-PAGE.

## Background

BMP-2 protein, like other bone morphogenetic proteins, plays an important role in the development of bone and cartilage. BMP-2 protein is involved in the hedgehog pathway, TGF beta signaling pathway, and cytokine-cytokine receptor interaction. BMP-2 and BMP-7 are osteogenic BMPs that have been demonstrated to potently induce osteoblast differentiation in a variety of cell types. BMP-2, BMP-4 and BMP-7 are known to be of major importance in bone formation and repair. In cancerous tissues BMP-2 protein may play an important role in the progression of glioma.

## For Research Use Only

A Reliable Research Partner in Life Science and Medicine

Toll-free: 1-888-852-8623

Web: [www.elabscience.com](http://www.elabscience.com)

Tel: 1-832-243-6086

Email: [techsupport@elabscience.com](mailto:techsupport@elabscience.com)

Fax: 1-832-243-6017