

Recombinant Human/Mouse/Rat/Rhesus/Canine BMP-2 Protein



Catalog Number:PKSH031986

Note: Centrifuge before opening to ensure complete recovery of vial contents.

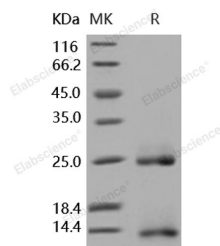
Description

| | |
|------------------------------------|--|
| Synonyms | BDA2;BDA2A;BMP-2;BMP2A;BMP2 |
| Species | Human |
| Expression Host | E.coli |
| Sequence | Gln283-Arg396 |
| Accession | NP_001191.1 |
| Calculated Molecular Weight | 13 kDa |
| Tag | None |
| Bioactivity | Measured by its ability to induce alkaline phosphatase production by MC3T3-E1 mouse osteoblastic cells. The ED50 for this effect is typically 0.5-2 µg/ml. |

Properties

| | |
|-----------------------|---|
| Purity | > 95 % as determined by reducing SDS-PAGE. |
| Endotoxin | Please contact us for more information. |
| Storage | Generally, lyophilized proteins are stable for up to 12 months when stored at -20 to -80°C. Reconstituted protein solution can be stored at 4-8°C for 2-7 days. Aliquots of reconstituted samples are stable at < -20°C for 3 months. |
| Shipping | This product is provided as lyophilized powder which is shipped with ice packs. |
| Formulation | Lyophilized from sterile 30 % CAN, 0.1 % TFA, pH 2.9. Normally 5 % - 8 % trehalose, mannitol and 0.01% Tween80 are added as protectants before lyophilization. Please refer to the specific buffer information in the printed manual. |
| Reconstitution | Please refer to the printed manual for detailed information. |

Data



> 95 % as determined by reducing SDS-PAGE.

Background

BMP-2 protein, like other bone morphogenetic proteins, plays an important role in the development of bone and cartilage. BMP-2 protein is involved in the hedgehog pathway, TGF beta signaling pathway, and cytokine-cytokine receptor interaction. BMP-2 and BMP-7 are osteogenic BMPs that have been demonstrated to potently induce osteoblast differentiation in a variety of cell types. BMP-2, BMP-4 and BMP-7 are known to be of major importance in bone formation and repair. In cancerous tissues BMP-2 protein may play an important role in the progression of glioma.

For Research Use Only

A Reliable Research Partner in Life Science and Medicine

Toll-free: 1-888-852-8623

Web: www.elabscience.com

Tel: 1-832-243-6086

Email: techsupport@elabscience.com

Fax: 1-832-243-6017