

# Recombinant Human Phosphatidylinositol 4-Kinase $\beta$ /PI4KB Protein(C-6His)



Catalog Number:PKSH032015

**Note:** Centrifuge before opening to ensure complete recovery of vial contents.

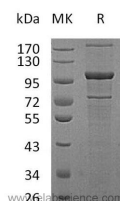
## Description

<b>Synonyms</b>	Phosphatidylinositol 4-Kinase Beta; PI4K-Beta; PI4KBeta; PtdIns 4-Kinase Beta; NPIK; PI4K92; PI4KB; PIK4CB
<b>Species</b>	Human
<b>Expression Host</b>	Human Cells
<b>Sequence</b>	Met 1-Met801
<b>Accession</b>	Q9UBF8-2
<b>Calculated Molecular Weight</b>	90.8 kDa
<b>Observed molecular weight</b>	95 kDa
<b>Tag</b>	C-6His

## Properties

<b>Purity</b>	> 95 % as determined by reducing SDS-PAGE.
<b>Endotoxin</b>	< 1.0 EU per $\mu$ g as determined by the LAL method.
<b>Storage</b>	Store at < -20°C, stable for 6 months after receipt. Please minimize freeze-thaw cycles.
<b>Shipping</b>	The product is shipped on dry ice/blue ice. Upon receipt, store it immediately at the temperature listed below.
<b>Formulation</b>	Supplied as a 0.2 $\mu$ m filtered solution of 25mM TrisHCl, 100mM glycine, 10% glycerol, pH7.3.
<b>Reconstitution</b>	Please refer to the printed manual for detailed information.

## Data



## Background

Phosphatidylinositol 4-Kinase  $\beta$  (PI4KB) belongs to the PI3/PI4-kinase family and Type III PI4K subfamily. PI4KB contains one PI3K/PI4K domain and one PIK helical domain. It is highly expressed in heart, skeletal muscle, pancreas, testis and ovary,; it is lowly expressed in liver tissue. PI4KB kinase activity can be inhibited by wortmannin, and increased by interacting with NCS1/FREQ. PI4KB phosphorylates phosphatidylinositol (PI) in the first committed step in the production of the second messenger inositol-1,4,5,-trisphosphate (PIP). In addition, PI4KB may regulate Golgi disintegration/reorganization during mitosis.

## For Research Use Only

A Reliable Research Partner in Life Science and Medicine

Toll-free: 1-888-852-8623

Web: [www.elabscience.com](http://www.elabscience.com)

Tel: 1-832-243-6086

Email: [techsupport@elabscience.com](mailto:techsupport@elabscience.com)

Fax: 1-832-243-6017