

Recombinant Human ADPRH/ARH1 Protein (His Tag)

Catalog No. PKSH032047

Note: Centrifuge before opening to ensure complete recovery of vial contents.

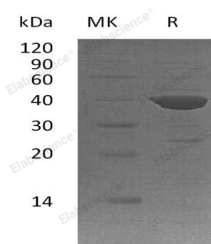
Description

Synonyms	[Protein ADP-Ribosylarginine] Hydrolase;ADP-Ribosylarginine Hydrolase;ADP-Ribose-L-Arginine Cleaving Enzyme;ADPRH;ARH1
Species	Human
Expression Host	E.coli
Sequence	Met 1-Leu357
Accession	P54922
Calculated Molecular Weight	41.7 kDa
Observed molecular weight	39 kDa
Tag	N-His
Bioactivity	Not validated for activity

Properties

Purity	> 90 % as determined by reducing SDS-PAGE.
Endotoxin	< 1.0 EU per µg of the protein as determined by the LAL method.
Storage	Store at < -20°C, stable for 6 months. Please minimize freeze-thaw cycles.
Shipping	This product is provided as liquid. It is shipped at frozen temperature with blue ice/gel packs. Upon receipt, store it immediately at < -20°C.
Formulation	Supplied as a 0.2 µm filtered solution of 20mM PB, 150mM NaCl, 50% Glycerol, pH 7.4.
Reconstitution	Not Applicable

Data



> 90 % as determined by reducing SDS-PAGE.

Background

ADP-Ribosylarginine Hydrolase (ADPRH) belongs to the ADP-Ribosylglycohydrolase family. ADPRH catalyzes removal of mono-ADP-ribose from arginine residues of proteins in the ADP-Ribosylation cycle, which is a post-translation modification that includes the addition of one or more ADP-ribose moieties. These reactions are related to cell signaling and the control of many cell processes, such as DNA repair and cell apoptosis. In addition, ADPRH binds with

For Research Use Only

magnesium ion and possess ADP-ribosylarginine hydrolase activity.

For Research Use Only

Toll-free: 1-888-852-8623

Web: www.elabscience.com

Tel: 1-832-243-6086

Email: techsupport@elabscience.com

Fax: 1-832-243-6017