

# Recombinant Human ALDH1A1/ALDC Protein (His Tag)

Catalog Number:PKSH032052



**Note:** Centrifuge before opening to ensure complete recovery of vial contents.

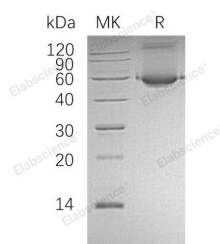
## Description

<b>Synonyms</b>	Retinal Dehydrogenase 1;RALDH 1;RalDH1;ALDH-E1;ALHDII;Aldehyde Dehydrogenase Family 1 Member A1;Aldehyde Dehydrogenase Cytosolic;ALDH1 A1;ALDC;ALDH1;PUMB10;ALDH11;HEL-9;HEL-S-53e;HEL12;PUMB1;RALDH1
<b>Species</b>	Human
<b>Expression Host</b>	E.coli
<b>Sequence</b>	Met 1-Ser501
<b>Accession</b>	P00352
<b>Calculated Molecular Weight</b>	57.0 kDa
<b>Observed molecular weight</b>	60 kDa
<b>Tag</b>	N-His

## Properties

<b>Purity</b>	> 95 % as determined by reducing SDS-PAGE.
<b>Endotoxin</b>	< 1.0 EU per µg of the protein as determined by the LAL method.
<b>Storage</b>	Store at < -20°C, stable for 6 months. Please minimize freeze-thaw cycles.
<b>Shipping</b>	This product is provided as liquid. It is shipped at frozen temperature with blue ice/gel packs. Upon receipt, store it immediately at < - 20°C.
<b>Formulation</b>	Supplied as a 0.2 µm filtered solution of 20mM Tris-HCl, 150mM NaCl, 20% Glycerol, 1mM DTT, pH 8.0.
<b>Reconstitution</b>	Not Applicable

## Data



> 95 % as determined by reducing SDS-PAGE.

## Background

Aldehyde Dehydrogenase Family 1 Member A1 (ALDH1A1) is a cytoplasmic enzyme that belongs to the Aldehyde Dehydrogenase family. ALDH1A1 is the second enzyme of the major oxidative pathway of alcohol metabolism. Two major liver isoforms of this enzyme, cytosolic and mitochondrial, can be distinguished by their electrophoretic mobilities, kinetic properties and subcellular localizations. ALDH1A1 is the main cytosolic isoform, which has a lower affinity for aldehydes than the mitochondrial enzyme. ALDH1A1 binds free retinal and cellular retinol-binding protein-bound retinal. It can convert/oxidize retinaldehyde to retinoic acid.

## For Research Use Only

A Reliable Research Partner in Life Science and Medicine

Toll-free: 1-888-852-8623

Web: [www.elabscience.com](http://www.elabscience.com)

Tel: 1-832-243-6086

Email: [techsupport@elabscience.com](mailto:techsupport@elabscience.com)

Fax: 1-832-243-6017