

Recombinant Human ALDH1A2 Protein (His Tag)

Catalog No. PKSH032053

Note: Centrifuge before opening to ensure complete recovery of vial contents.

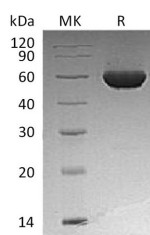
Description

Synonyms	Aldehyde dehydrogenase family 1 member A2;Retinaldehyde-specific dehydrogenase type 2;RALDH(II);Retinal dehydrogenase 2;ALDH1A2;RALDH2
Species	Human
Expression Host	E.coli
Sequence	Met 1-Ser518
Accession	O94788
Calculated Molecular Weight	58.2 kDa
Observed molecular weight	50-65 kDa
Tag	N-His
Bioactivity	Not validated for activity

Properties

Purity	> 95 % as determined by reducing SDS-PAGE.
Endotoxin	< 1.0 EU per µg of the protein as determined by the LAL method.
Storage	Store at < -20°C, stable for 6 months. Please minimize freeze-thaw cycles.
Shipping	This product is provided as liquid. It is shipped at frozen temperature with blue ice/gel packs. Upon receipt, store it immediately at < -20°C.
Formulation	Supplied as a 0.2 µm filtered solution of 20mM Tris-HCl, 150mM NaCl, 20% Glycerol, pH 7.5.
Reconstitution	Not Applicable

Data



> 95 % as determined by reducing SDS-PAGE.

Background

Aldehyde dehydrogenase 1 family member A2 (ALDH1A2), also known as retinaldehyde dehydrogenase 2 (RALDH2), belongs to the aldehyde dehydrogenase family which contains two members, the ALDH1 s (ALDH1A1, ALDH1A2 and ALDH1A3) and the 9-cis retinaldehyde dehydrogenase ALDH8 s. ALDH1A2 is key enzyme that catalyzes the synthesis of retinoic acid (RA) from retinaldehyde. RA is a paracrine hormone signaling molecule that functions in developing and

For Research Use Only

adult tissues. ALDH1A2 was also found to regulate normal and tumor cell growth and differentiation. Several studies showed that ALDH1A2 expression is increased after the appearance of AraC resistance in clinical cases which means this protein is effective in AraC resistance.