

Recombinant Human Ameloblastin/AMBN Protein (His Tag)

Catalog Number:PKSH032061

Note: Centrifuge before opening to ensure complete recovery of vial contents.

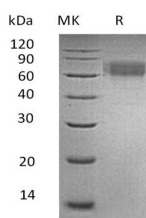
Description

Synonyms	Ameloblastin;AMBN
Species	Human
Expression Host	HEK293 Cells
Sequence	Val27-Pro447
Accession	AAI06932.1
Calculated Molecular Weight	46.4 kDa
Observed molecular weight	60-80 kDa
Tag	C-His

Properties

Purity	> 95 % as determined by reducing SDS-PAGE.
Endotoxin	< 1.0 EU per µg of the protein as determined by the LAL method.
Storage	Generally, lyophilized proteins are stable for up to 12 months when stored at -20 to -80°C. Reconstituted protein solution can be stored at 4-8°C for 2-7 days. Aliquots of reconstituted samples are stable at < -20°C for 3 months.
Shipping	This product is provided as lyophilized powder which is shipped with ice packs.
Formulation	Lyophilized from a 0.2 µm filtered solution of 20mM PB,150mM NaCl,pH7.4. Normally 5 % - 8 % trehalose, mannitol and 0.01% Tween80 are added as protectants before lyophilization. Please refer to the specific buffer information in the printed manual
Reconstitution	Please refer to the printed manual for detailed information.

Data



> 95 % as determined by reducing SDS-PAGE.

Background

Ameloblastin (AMBN) is a member of the Ameloblastin family. AMBN is a secreted protein and is specially expressed in ameloblast, localizing to the Tomes processes of secretory ameloblasts and in the sheath space between rod-interrod enamel Mutations of this protein may be associated with dentinogenesis imperfect and autosomal dominant amylogenesis imperfect. Ameloblastin may play an important role in the formation and mineralization of the enamel matrix. Biochemically, it is classified as an intrinsically disordered protein (IDP). Its biological role remains largely unknown.

For Research Use Only

A Reliable Research Partner in Life Science and Medicine

Toll-free: 1-888-852-8623

Web: www.elabscience.com

Tel: 1-832-243-6086

Email: techsupport@elabscience.com

Fax: 1-832-243-6017