

Recombinant Human ACE2 Protein (His Tag)

Catalog Number:PKSH032068

1 Publications



Note: Centrifuge before opening to ensure complete recovery of vial contents.

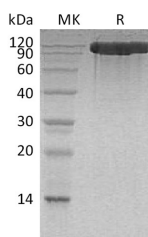
Description

Synonyms	Angiotensin-Converting Enzyme 2;ACE-Related Carboxypeptidase;Angiotensin-Converting Enzyme Homolog;ACEH;Metalloprotease MPROT15;ACE2
Species	Human
Expression Host	HEK293 Cells
Sequence	Gln18-Ser740
Accession	Q9BYF1
Calculated Molecular Weight	84.6 kDa
Observed molecular weight	103 kDa
Tag	C-His
Bioactivity	Loaded 2019-nCoV S Protein RBD-mFc on AMC Biosensor, can bind Human ACE-2-His with an affinity constant of 2.06 nM as determined in BLI assay.

Properties

Purity	> 95 % as determined by reducing SDS-PAGE.
Endotoxin	< 1.0 EU per µg of the protein as determined by the LAL method.
Storage	Store at < -20°C, stable for 6 months. Please minimize freeze-thaw cycles.
Shipping	This product is provided as liquid. It is shipped at frozen temperature with blue ice/gel packs. Upon receipt, store it immediately at < - 20°C.
Formulation	Supplied as a 0.2 µm filtered solution of 20mM Tris-HCl, 300mM NaCl, 1mM ZnCl ₂ , 10% Glycerol, pH 7.4.
Reconstitution	Not Applicable

Data



> 95 % as determined by reducing SDS-PAGE.

Background

Angiotensin-Converting Enzyme 2 (ACE-2) is an integral membrane protein and a zinc metalloprotease of the ACE family, the ACE family includes somatic and germinal ACE. ACE-2 cleaves angiotensins I and II as a carboxypeptidase, ACE-2 converts angiotensin I to angiotensin 1-9, and angiotensin II to angiotensin 1-7. ACE-2 is also able to hydrolyze apelin-13 and dynorphin-13 with high efficiency. ACE-2 can be high expressed in testis, kidney and heart, in colon, small intestine and ovary at moderate levels. Captopril and lisinopril as the classical ACE inhibitor don't inhibit ACE-2 activity. ACE-2 may play an important role in regulating the heart function.

For Research Use Only

A Reliable Research Partner in Life Science and Medicine

Toll-free: 1-888-852-8623

Tel: 1-832-243-6086

Fax: 1-832-243-6017

Web: www.elabscience.com

Email: techsupport@elabscience.com