

Recombinant Human ATG10 Protein (His&T7 Tag)

Catalog Number:PKSH032097



Note: Centrifuge before opening to ensure complete recovery of vial contents.

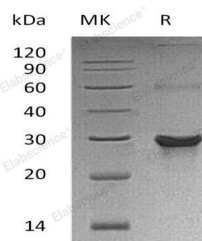
Description

Synonyms	Ubiquitin-Like-Conjugating Enzyme ATG10;Autophagy-Related Protein 10;APG10-Like;ATG10
Species	Human
Expression Host	E.coli
Sequence	Met 1-Thr190
Accession	Q9H0Y0
Calculated Molecular Weight	24.5 kDa
Observed molecular weight	30 kDa
Tag	N-T7 & C-His

Properties

Purity	> 90 % as determined by reducing SDS-PAGE.
Endotoxin	< 1.0 EU per µg of the protein as determined by the LAL method.
Storage	Store at < -20°C, stable for 6 months. Please minimize freeze-thaw cycles.
Shipping	This product is provided as liquid. It is shipped at frozen temperature with blue ice/gel packs. Upon receipt, store it immediately at < - 20°C.
Formulation	Supplied as a 0.2 µm filtered solution of 20mM Tris-HCl, 8% Sucrose, 20% Glycerol, 0.02% Tween 80, 3mM TCEP, pH 8.5.
Reconstitution	Not Applicable

Data



> 90 % as determined by reducing SDS-PAGE.

Background

Ubiquitin-Like-Conjugating Enzyme ATG10 (ATG10) is a ubiquitous 28kDa member of the ATG10 family protein. ATG10 acts as an E2-like enzyme, catalyzes the transfer of ATG12 to ATG5 during in the initial stages of autophagosome formation. The heterodimer of ATG5 and ATG12 subsequently associates non-covalently with an ATG16 multimer to generate an antophagosome. ATG10 plays a role in the conjugation of ATG12 to ATG5 by interaction with MAP1LC3A. In addition, ATG10 can directly interact with ATG5 or ATG7.

For Research Use Only

A Reliable Research Partner in Life Science and Medicine

Toll-free: 1-888-852-8623

Web: www.elabscience.com

Tel: 1-832-243-6086

Email: techsupport@elabscience.com

Fax: 1-832-243-6017