

Recombinant Human ATG3 Protein

Catalog Number:PKSH032098



Note: Centrifuge before opening to ensure complete recovery of vial contents.

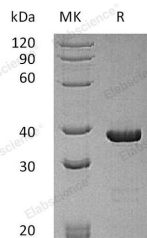
Description

Synonyms	Ubiquitin-like-conjugating enzyme ATG3;Autophagy-related protein 3;APG3-like;hApg3;Protein PC3-96;ATG3;APG3;APG3L
Species	Human
Expression Host	E.coli
Sequence	Met 1-Met314
Accession	Q9NT62
Calculated Molecular Weight	36.0 kDa
Observed molecular weight	38 kDa
Tag	None

Properties

Purity	> 95 % as determined by reducing SDS-PAGE.
Endotoxin	< 1.0 EU per µg of the protein as determined by the LAL method.
Storage	Store at < -20°C, stable for 6 months. Please minimize freeze-thaw cycles.
Shipping	This product is provided as liquid. It is shipped at frozen temperature with blue ice/gel packs. Upon receipt, store it immediately at < - 20°C.
Formulation	Supplied as a 0.2 µm filtered solution of 20mM Tris-HCl, 150mM NaCl, 10% Glycerol, pH 8.0.
Reconstitution	Not Applicable

Data



> 95 % as determined by reducing SDS-PAGE.

Background

Ubiquitin-like-conjugating enzyme ATG3 (ATG3), also known as Apg3L and Apg3p, functions as a regulatory component of autophagosome biogenesis necessary for autophagy. ATG3 exhibits 98% aa sequence identity with both its mouse and rat orthologs. It is widely expressed and has highly levels in heart, skeletal muscle, kidney, liver and placenta. As an E2-like enzyme, involves in autophagy and mitochondrial homeostasis. ATG3 catalyzes the conjugation of ATG8-like proteins to PE which is essential for autophagy. ATG3 also can catalyze the conjugation of ATG12 to itself which paly a role in mitochondrial homeostasis but not in autophagy.

For Research Use Only

A Reliable Research Partner in Life Science and Medicine

Toll-free: 1-888-852-8623

Web: www.elabscience.com

Tel: 1-832-243-6086

Email: techsupport@elabscience.com

Fax: 1-832-243-6017