

Recombinant Human ATG4C Protein (His Tag)

Catalog Number:PKSH032100



Note: Centrifuge before opening to ensure complete recovery of vial contents.

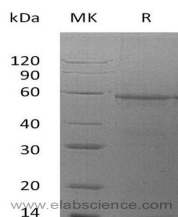
Description

Synonyms	Cysteine Protease ATG4C; AUT-Like 3 Cysteine Endopeptidase; Autophagin-3; Autophagy-Related Cysteine Endopeptidase 3; Autophagy-Related Protein 4 homolog C; ATG4C; APG4C; AUTL1; AUTL3
Species	Human
Expression Host	E.coli
Sequence	Met1-Leu458
Accession	Q96DT6
Calculated Molecular Weight	53.6 kDa
Observed molecular weight	58 kDa
Tag	C-6His

Properties

Purity	> 90 % as determined by reducing SDS-PAGE.
Endotoxin	< 1.0 EU per µg as determined by the LAL method.
Storage	Store at < -20°C, stable for 6 months. Please minimize freeze-thaw cycles.
Shipping	This product is provided as liquid. It is shipped at frozen temperature with blue ice/gel packs. Upon receipt, store it immediately at < -20°C.
Formulation	Supplied as a 0.2 µm filtered solution of 20mM TrisHCl, 100mM NaCl, 10% Glycerol, pH 8.0.
Reconstitution	Not Applicable

Data



Background

Cysteine Protease ATG4C (ATG4C) belongs to the peptidase C54 family. It is required for autophagy, which cleaves the C-terminal part of either MAP1LC3, GABARAPL2 or GABARAP, allowing the liberation of form I. A subpopulation of form I is subsequently converted to a smaller form which is considered to be the phosphatidylethanolamine (PE)-conjugated form, and has the capacity for the binding to autophagosomes. ATG4C is a cytoplasmic protein and high expressed in skeletal muscle, liver, testis and heart. ATG4C can be inhibited by N-ethylmaleimide.

For Research Use Only

A Reliable Research Partner in Life Science and Medicine

Toll-free: 1-888-852-8623

Web: www.elabscience.com

Tel: 1-832-243-6086

Email: techsupport@elabscience.com

Fax: 1-832-243-6017