

# Recombinant Human ATG5 Protein

Catalog Number:PKSH032101



**Note:** Centrifuge before opening to ensure complete recovery of vial contents.

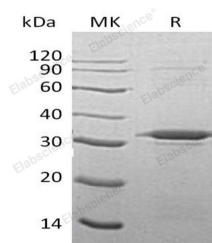
## Description

<b>Synonyms</b>	Autophagy protein 5;APG5-like;Apoptosis-specific protein;APG5L;ASP;ATG5;
<b>Species</b>	Human
<b>Expression Host</b>	E.coli
<b>Sequence</b>	Met 1-Asp275
<b>Accession</b>	Q9H1Y0
<b>Calculated Molecular Weight</b>	32.4 kDa
<b>Observed molecular weight</b>	33 kDa
<b>Tag</b>	None

## Properties

<b>Purity</b>	> 90 % as determined by reducing SDS-PAGE.
<b>Endotoxin</b>	< 1.0 EU per µg of the protein as determined by the LAL method.
<b>Storage</b>	Store at < -20°C, stable for 6 months. Please minimize freeze-thaw cycles.
<b>Shipping</b>	This product is provided as liquid. It is shipped at frozen temperature with blue ice/gel packs. Upon receipt, store it immediately at < - 20°C.
<b>Formulation</b>	Supplied as a 0.2 µm filtered solution of 20mM Tris-HCl, 0.2M NaCl, 1mM DTT, 40% Glycerol, pH 8.0.
<b>Reconstitution</b>	Not Applicable

## Data



> 90 % as determined by reducing SDS-PAGE.

## Background

ATG5 is an E2 ubiquitin ligase which is necessary for autophagy. Its expression is a relatively late event in the apoptotic process, occurring downstream of caspase activity, dramatically highly expressed in apoptotic cells. It is activated by ATG7, conjugates to ATG12 and associates with isolation membrane to form cup-shaped isolation membrane and autophagosome. The conjugate complex detaches from the membrane immediately before or after autophagosome formation is completed. ATG5 plays an important role in the apoptotic process, possibly within the modified cytoskeleton.

## For Research Use Only

A Reliable Research Partner in Life Science and Medicine

Toll-free: 1-888-852-8623

Web: [www.elabscience.com](http://www.elabscience.com)

Tel: 1-832-243-6086

Email: [techsupport@elabscience.com](mailto:techsupport@elabscience.com)

Fax: 1-832-243-6017