

# Recombinant Human BCL-W/BCL2L2 Protein (His Tag)

Catalog Number:PKSH032116



**Note:** Centrifuge before opening to ensure complete recovery of vial contents.

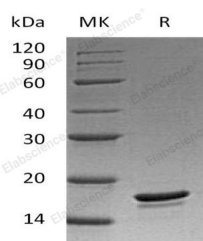
## Description

<b>Synonyms</b>	Bcl-2-Like Protein 2;Bcl2-L-2;Apoptosis Regulator Bcl-W;BCL2L2;BCLW;KIAA0271
<b>Species</b>	Human
<b>Expression Host</b>	E.coli
<b>Sequence</b>	Ala2-Thr172
<b>Accession</b>	AAI13523.1
<b>Calculated Molecular Weight</b>	19.9 kDa
<b>Observed molecular weight</b>	18 kDa
<b>Tag</b>	C-His

## Properties

<b>Purity</b>	> 95 % as determined by reducing SDS-PAGE.
<b>Endotoxin</b>	< 1.0 EU per µg of the protein as determined by the LAL method.
<b>Storage</b>	Store at < -20°C, stable for 6 months. Please minimize freeze-thaw cycles.
<b>Shipping</b>	This product is provided as liquid. It is shipped at frozen temperature with blue ice/gel packs. Upon receipt, store it immediately at < - 20°C.
<b>Formulation</b>	Supplied as a 0.2 µm filtered solution of 25mM HEPES, 100mM KCl, 20% Glycerol, pH 7.5.
<b>Reconstitution</b>	Not Applicable

## Data



> 95 % as determined by reducing SDS-PAGE.

## Background

Bcl-2-like protein 2 (BCL2L2) belongs to the Bcl-2 family. BCL2L2 is highly expressed in the brain, spinal cord, testis, pancreas, heart, spleen, and mammary glands. BCL2L2 is a peripheral membrane protein containing three motifs, BH1, BH2 and BH4. The BH4 motif appears to be involved in the anti-apoptotic function. The BH1 and BH2 motifs form a hydrophobic groove which acts as a docking site for the BH3 domain of some pro-apoptotic proteins. BCL2L2 promotes cell survival and blocks dexamethasone-induced apoptosis. Furthermore, BCL2L2 mediates survival of postmitotic Sertoli cells by suppressing death-promoting activity of BAX.

## For Research Use Only

A Reliable Research Partner in Life Science and Medicine

Toll-free: 1-888-852-8623

Web: [www.elabscience.com](http://www.elabscience.com)

Tel: 1-832-243-6086

Email: [techsupport@elabscience.com](mailto:techsupport@elabscience.com)

Fax: 1-832-243-6017