

Recombinant Human BLVRA Protein (His Tag)

Catalog Number:PKSH032118



Note: Centrifuge before opening to ensure complete recovery of vial contents.

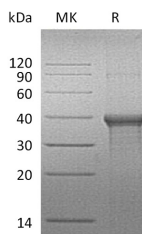
Description

Synonyms	BLVRA;Biliverdin reductase A;BVR A;Biliverdin-IX alpha-reductase;BLVR;BVR
Species	Human
Expression Host	E.coli
Sequence	Glu6-Ser294
Accession	P53004
Calculated Molecular Weight	33.8 kDa
Observed molecular weight	35-45 kDa
Tag	C-His

Properties

Purity	> 95 % as determined by reducing SDS-PAGE.
Endotoxin	< 1.0 EU per µg of the protein as determined by the LAL method.
Storage	Store at < -20°C, stable for 6 months. Please minimize freeze-thaw cycles.
Shipping	This product is provided as liquid. It is shipped at frozen temperature with blue ice/gel packs. Upon receipt, store it immediately at < - 20°C.
Formulation	Supplied as a 0.2 µm filtered solution of 20mM Tris-HCl, 100mM NaCl, 50% Glycerol, pH 8.0.
Reconstitution	Not Applicable

Data



> 95 % as determined by reducing SDS-PAGE.

Background

Human Biliverdin reductase A (BLVRA) is belonged to the Gfo/Idh/MocA family and Biliverdin reductase subfamily. BLVRA is an enzyme that in humans is encoded by the BLVRA gene. BLVRA plays an important role in reducing the gamma-methene bridge of the open tetrapyrrole, biliverdin IX alpha, to bilirubin with the concomitant oxidation of a NADH or NADPH cofactor. BLVRA acts on biliverdin by reducing its double-bond between the pyrrole rings into a single-bond. It accomplishes this using NADPH + H⁺ as an electron donor, forming bilirubin and NADP⁺ as products.

For Research Use Only

A Reliable Research Partner in Life Science and Medicine

Toll-free: 1-888-852-8623

Web: www.elabscience.com

Tel: 1-832-243-6086

Email: techsupport@elabscience.com

Fax: 1-832-243-6017