

# Recombinant Human Brain Natriuretic Peptide/BNP Protein (His & Flag Tag)

Catalog Number:PKSH032127

**Note:** Centrifuge before opening to ensure complete recovery of vial contents.

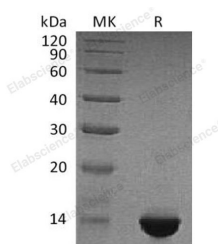
## Description

<b>Synonyms</b>	Natriuretic peptides B;Gamma-brain natriuretic peptide;NPPB;BNP
<b>Species</b>	Human
<b>Expression Host</b>	E.coli
<b>Sequence</b>	His27-Arg102
<b>Accession</b>	P16860
<b>Calculated Molecular Weight</b>	11.0 kDa
<b>Observed molecular weight</b>	14 kDa
<b>Tag</b>	N-His-Flag

## Properties

<b>Purity</b>	> 95 % as determined by reducing SDS-PAGE.
<b>Endotoxin</b>	< 1.0 EU per µg of the protein as determined by the LAL method.
<b>Storage</b>	Generally, lyophilized proteins are stable for up to 12 months when stored at -20 to -80°C. Reconstituted protein solution can be stored at 4-8°C for 2-7 days. Aliquots of reconstituted samples are stable at < -20°C for 3 months.
<b>Shipping</b>	This product is provided as lyophilized powder which is shipped with ice packs.
<b>Formulation</b>	Lyophilized from a 0.2 µm filtered solution of 20mM Tris-HCl, 150mM NaCl, pH 8.0. Normally 5 % - 8 % trehalose, mannitol and 0.01 % Tween80 are added as protectants before lyophilization. Please refer to the specific buffer information in the print
<b>Reconstitution</b>	Please refer to the printed manual for detailed information.

## Data



> 95 % as determined by reducing SDS-PAGE.

## Background

Brain-type Natriuretic Peptide (BNP) is a nonglycosylated peptide that is produced predominantly by ventricular myocytes and belongs to the natriuretic peptide family. Proteolytic cleavage of the 12 kDa BNP precursor gives rise to N-terminal Pro BNP (NT-proBNP) and mature BNP. N-terminal proB-type natriuretic peptide (NT-proBNP); a useful marker of heart failure (HF); is considered to be secreted mainly from the ventricle; increased serum NT-proBNP levels are also encountered in conditions such as atrial fibrillation (AF) and atrial septal defect in patients without HF.

## For Research Use Only

A Reliable Research Partner in Life Science and Medicine

Toll-free: 1-888-852-8623

Web: [www.elabscience.com](http://www.elabscience.com)

Tel: 1-832-243-6086

Email: [techsupport@elabscience.com](mailto:techsupport@elabscience.com)

Fax: 1-832-243-6017