

# Recombinant Human BCAN Protein (His Tag)

Catalog Number:PKSH032130



**Note:** Centrifuge before opening to ensure complete recovery of vial contents.

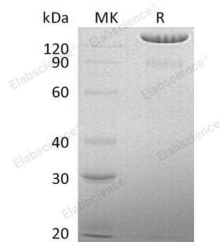
## Description

|                                    |                                                                                                                           |
|------------------------------------|---------------------------------------------------------------------------------------------------------------------------|
| <b>Synonyms</b>                    | Brevican Core Protein;Brain-Enriched Hyaluronan-Binding Protein;BEHAB;Chondroitin Sulfate Proteoglycan 7;BCAN;BEHAB;CSPG7 |
| <b>Species</b>                     | Human                                                                                                                     |
| <b>Expression Host</b>             | HEK293 Cells                                                                                                              |
| <b>Sequence</b>                    | Asp23-Pro911                                                                                                              |
| <b>Accession</b>                   | AAH09117.1                                                                                                                |
| <b>Calculated Molecular Weight</b> | 97.8 kDa                                                                                                                  |
| <b>Observed molecular weight</b>   | 75-150 kDa                                                                                                                |
| <b>Tag</b>                         | C-His                                                                                                                     |

## Properties

|                       |                                                                                                                                                                                                                                                            |
|-----------------------|------------------------------------------------------------------------------------------------------------------------------------------------------------------------------------------------------------------------------------------------------------|
| <b>Purity</b>         | > 95 % as determined by reducing SDS-PAGE.                                                                                                                                                                                                                 |
| <b>Endotoxin</b>      | < 1.0 EU per µg of the protein as determined by the LAL method.                                                                                                                                                                                            |
| <b>Storage</b>        | Generally, lyophilized proteins are stable for up to 12 months when stored at -20 to -80°C. Reconstituted protein solution can be stored at 4-8°C for 2-7 days. Aliquots of reconstituted samples are stable at < -20°C for 3 months.                      |
| <b>Shipping</b>       | This product is provided as lyophilized powder which is shipped with ice packs.                                                                                                                                                                            |
| <b>Formulation</b>    | Lyophilized from a 0.2 µm filtered solution of 20mM PB, 150mM NaCl, pH 7.4. Normally 5 % - 8 % trehalose, mannitol and 0.01% Tween80 are added as protectants before lyophilization.<br>Please refer to the specific buffer information in the printed man |
| <b>Reconstitution</b> | Please refer to the printed manual for detailed information.                                                                                                                                                                                               |

## Data



> 95 % as determined by reducing SDS-PAGE.

## Background

Brevican Core Protein (BCAN) is a secreted protein that belongs to the aggrecan/versican proteoglycan family. BCAN contains one C-type lectin domain, one EGF-like domain, one Ig-like V-type domain, one Sushi (CCP/SCR) domain and two Link domains. BCAN may play a role in the terminally differentiating and the adult nervous system during postnatal development. BCAN could stabilize interactions between hyaluronan (HA) and brain proteoglycans.

## For Research Use Only

A Reliable Research Partner in Life Science and Medicine

Toll-free: 1-888-852-8623

Web: [www.elabscience.com](http://www.elabscience.com)

Tel: 1-832-243-6086

Email: [techsupport@elabscience.com](mailto:techsupport@elabscience.com)

Fax: 1-832-243-6017