

Recombinant Human Bridging Integrator 2/BIN2 Protein (His Tag)



Catalog Number:PKSH032131

Note: Centrifuge before opening to ensure complete recovery of vial contents.

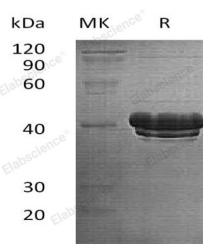
Description

Synonyms	Bridging Integrator 2;Breast Cancer-Associated Protein 1;BIN2;BRAP1
Species	Human
Expression Host	E.coli
Sequence	Met 1-Asn244
Accession	Q9UBW5
Calculated Molecular Weight	30.6 kDa
Observed molecular weight	32 kDa
Tag	N-His

Properties

Purity	> 90 % as determined by reducing SDS-PAGE.
Endotoxin	< 1.0 EU per µg of the protein as determined by the LAL method.
Storage	Generally, lyophilized proteins are stable for up to 12 months when stored at -20 to -80°C. Reconstituted protein solution can be stored at 4-8°C for 2-7 days. Aliquots of reconstituted samples are stable at < -20°C for 3 months.
Shipping	This product is provided as lyophilized powder which is shipped with ice packs.
Formulation	Lyophilized from a 0.2 µm filtered solution of 20mM Tris-HCl, 150mM NaCl, pH 8.0. Normally 5 % - 8 % trehalose, mannitol and 0.01 % Tween80 are added as protectants before lyophilization. Please refer to the specific buffer information in the print
Reconstitution	Please refer to the printed manual for detailed information.

Data



> 90 % as determined by reducing SDS-PAGE.

Background

Bridging Integrator 2 (BIN2) is a cytoplasmic protein. BIN2 contains one BAR domain and Interacts with BIN1. BIN2 is highly expressed in some hematopoietic tissues, including peripheral blood, thymus, colon and placenta. BIN2 is an Arabidopsis GSK3-like kinase that negatively regulates brassinosteroid (BR) signaling. Genetic studies show that BIN2 is inhibited in response to BR perception at the cell surface to relieve its inhibitory effects on downstream targets.

For Research Use Only

A Reliable Research Partner in Life Science and Medicine

Toll-free: 1-888-852-8623

Web: www.elabscience.com

Tel: 1-832-243-6086

Email: techsupport@elabscience.com

Fax: 1-832-243-6017