

Recombinant Human Butyrophilin 1A1/BTN1A1 Protein (His Tag)



Catalog Number:PKSH032132

Note: Centrifuge before opening to ensure complete recovery of vial contents.

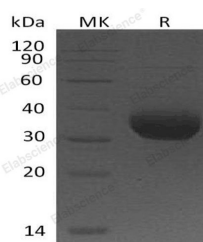
Description

| | |
|------------------------------------|--|
| Synonyms | Butyrophilin Subfamily 1 Member A1;BT;BTN1A1;BTN |
| Species | Human |
| Expression Host | HEK293 Cells |
| Sequence | Ala27-Arg242 |
| Accession | Q13410 |
| Calculated Molecular Weight | 25.0 kDa |
| Observed molecular weight | 31-37 kDa |
| Tag | C-His |

Properties

| | |
|-----------------------|---|
| Purity | > 95 % as determined by reducing SDS-PAGE. |
| Endotoxin | < 1.0 EU per µg of the protein as determined by the LAL method. |
| Storage | Generally, lyophilized proteins are stable for up to 12 months when stored at -20 to -80°C. Reconstituted protein solution can be stored at 4-8°C for 2-7 days. Aliquots of reconstituted samples are stable at < -20°C for 3 months. |
| Shipping | This product is provided as lyophilized powder which is shipped with ice packs. |
| Formulation | Lyophilized from a 0.2 µm filtered solution of 20mM PB, 150mM NaCl, pH 7.2. Normally 5 % - 8 % trehalose, mannitol and 0.01% Tween80 are added as protectants before lyophilization. Please refer to the specific buffer information in the printed man |
| Reconstitution | Please refer to the printed manual for detailed information. |

Data



> 95 % as determined by reducing SDS-PAGE.

Background

Butyrophilin Subfamily 1 Member A1 (BTN1A1) is the major protein associated with fat droplets in the milk. It belongs to the immunoglobulin superfamily. BTN1A1 acts as a specific membrane-associated receptor for the association of cytoplasmic droplets with the apical plasma membrane. It is localized to the major histocompatibility complex (MHC) class I region of 6p. It may have arisen relatively recently in evolution by the shuffling of exons between 2 ancestral gene families. It is shown that BTN1A1 inhibits the proliferation of CD4 and CD8 T-cells activated by anti-CD3 antibodies, T-cell metabolism and IL2 and IFNG secretion.

For Research Use Only

A Reliable Research Partner in Life Science and Medicine

Toll-free: 1-888-852-8623

Web: www.elabscience.com

Tel: 1-832-243-6086

Email: techsupport@elabscience.com

Fax: 1-832-243-6017