

Recombinant Human Cadherin-16/CDH16 Protein (His Tag)

Catalog Number:PKSH032138

Note: Centrifuge before opening to ensure complete recovery of vial contents.

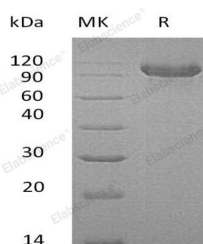
Description

Synonyms	CDH16;Cadherin-16;Kidney-specific cadherin;Ksp-cadherin
Species	Human
Expression Host	HEK293 Cells
Sequence	Pro18-Ala786
Accession	O75309
Calculated Molecular Weight	84.4 kDa
Observed molecular weight	90-115 kDa
Tag	C-His

Properties

Purity	> 76 % as determined by reducing SDS-PAGE.
Endotoxin	< 1.0 EU per µg of the protein as determined by the LAL method.
Storage	Generally, lyophilized proteins are stable for up to 12 months when stored at -20 to -80°C. Reconstituted protein solution can be stored at 4-8°C for 2-7 days. Aliquots of reconstituted samples are stable at < -20°C for 3 months.
Shipping	This product is provided as lyophilized powder which is shipped with ice packs.
Formulation	Lyophilized from a 0.2 µm filtered solution of 20mM PB, 150mM NaCl, pH 7.4. Normally 5 % - 8 % trehalose, mannitol and 0.01% Tween80 are added as protectants before lyophilization. Please refer to the specific buffer information in the printed manual
Reconstitution	Please refer to the printed manual for detailed information.

Data



> 76 % as determined by reducing SDS-PAGE.

Background

Cadherin-16(CDH16) is a single-pass type I membrane protein which contains six cadherin domains. Mature cadherin proteins consist of a large N-terminal extracellular domain, a single membrane-spanning domain, and a small highly conserved C-terminal cytoplasmic domain. Cadherins are calcium-dependent cell adhesion proteins and may contribute to the sorting of heterogeneous cell types. They preferentially interact with themselves in a homophilic manner in connecting cells. Three calcium ions are usually bound at the interface of each cadherin domain and rigidify the connections, imparting a strong curvature to the full-length ectodomain. CDH16 is exclusively expressed in kidney, where the protein functions as the principal mediator of homotypic cellular recognition. It plays a role in the morphogenic direction of tissue development. CDH16 is composed of an extracellular domain containing 6 cadherin domains, a transmembrane region

For Research Use Only

A Reliable Research Partner in Life Science and Medicine

Toll-free: 1-888-852-8623

Web: www.elabscience.com

Tel: 1-832-243-6086

Email: techsupport@elabscience.com

Fax: 1-832-243-6017

Recombinant Human Cadherin-16/CDH16 Protein (His Tag)



Catalog Number:PKSH032138

and a truncated cytoplasmic domain. However, it lacks the prosequence and tripeptide HAV adhesion recognition sequence typical of most classical cadherins.

For Research Use Only

A Reliable Research Partner in Life Science and Medicine

Toll-free: 1-888-852-8623

Tel: 1-832-243-6086

Fax: 1-832-243-6017

Web: www.elabscience.com

Email: techsupport@elabscience.com