

Recombinant Human Cadherin-6/CDH6 Protein (Fc Tag)

Catalog No. PKSH032141

Note: Centrifuge before opening to ensure complete recovery of vial contents.

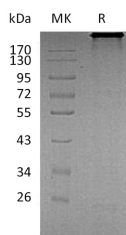
Description

Synonyms	Cadherin-6;Kidney Cadherin;K-Cadherin;CDH6;KCAD
Species	Human
Expression Host	HEK293 Cells
Sequence	Thr19-Ala615&Ser54-Ala615
Accession	P55285
Calculated Molecular Weight	93.5 kDa(pro), 90 kDa(mature)
Observed molecular weight	110-130 kDa
Tag	C-Fc & C-Fc
Bioactivity	Not validated for activity

Properties

Purity	> 90 % as determined by reducing SDS-PAGE.
Endotoxin	< 1.0 EU per µg of the protein as determined by the LAL method.
Storage	Generally, lyophilized proteins are stable for up to 12 months when stored at -20 to -80°C. Reconstituted protein solution can be stored at 4-8°C for 2-7 days. Aliquots of reconstituted samples are stable at < -20°C for 3 months.
Shipping	This product is provided as lyophilized powder which is shipped with ice packs.
Formulation	Lyophilized from a 0.2 µm filtered solution of PBS, pH 7.4. Normally 5 % - 8 % trehalose, mannitol and 0.01% Tween80 are added as protectants before lyophilization. Please refer to the specific buffer information in the printed manual.
Reconstitution	Please refer to the printed manual for detailed information.

Data



> 90 % as determined by reducing SDS-PAGE.

Background

Cadherin-6 (CDH6) is a type-II classic cadherin cell-cell adhesion molecules, which are expressed in graded or areal patterns, as well as layer-specific patterns, in the cortical plate. Human Cadherin-6 is synthesized as a 790 aa type I

For Research Use Only

transmembrane glycoprotein that contains a 18 aa signal peptide, a 35 aa propeptide, a 562 aa extracellular region, a 21 aa transmembrane segment, and a 154 aa cytoplasmic domain. There are five cadherin domains of approximately 110 aa each in the extracellular region. Cadherin-6 has high expression in kidney, brain, and cerebellum, and may contribute to the formation of the segmental structure of the early brain, as well as the development of renal proximal tubules. Weak expression is also detected in lung, pancreas, gastric mucosa and cytotrophoblasts. As a classic cadherin, Cadherin-6 will form homodimers and promote intercellular adhesion with itself and, possibly, Cadherin-9 and -14.