

Recombinant Human Calcineurin B/CNB Protein (His Tag)



Catalog Number:PKSH032144

Note: Centrifuge before opening to ensure complete recovery of vial contents.

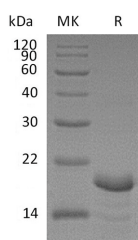
Description

Synonyms	Calcineurin Subunit B Type 1;Protein Phosphatase 2B Regulatory Subunit 1;Protein Phosphatase 3 Regulatory Subunit B Alpha Osoform 1;PPP3R1;CNA2;CNB
Species	Human
Expression Host	E.coli
Sequence	Met 1-Val170
Accession	P63098
Calculated Molecular Weight	21.5 kDa
Observed molecular weight	18-22 kDa
Tag	N-His

Properties

Purity	> 95 % as determined by reducing SDS-PAGE.
Endotoxin	< 1.0 EU per µg of the protein as determined by the LAL method.
Storage	Generally, lyophilized proteins are stable for up to 12 months when stored at -20 to -80°C. Reconstituted protein solution can be stored at 4-8°C for 2-7 days. Aliquots of reconstituted samples are stable at < -20°C for 3 months.
Shipping	This product is provided as lyophilized powder which is shipped with ice packs.
Formulation	Lyophilized from a 0.2 µm filtered solution of 20mM Tris-HCl, 100mM NaCl, 2mM DTT, pH 8.0 . Normally 5 % - 8 % trehalose, mannitol and 0.01% Tween80 are added as protectants before lyophilization. Please refer to the specific buffer information in
Reconstitution	Please refer to the printed manual for detailed information.

Data



> 95 % as determined by reducing SDS-PAGE.

Background

Calcineurin Subunit B Type 1 belongs to the calcineurin regulatory subunit family. Calcineurin Subunit B Type 1 is a Ser/Thr-specific calcium and calmodulin-dependent protein phosphatase. It is composed of a catalytic subunit (A) and a regulatory subunit (B). It contains four EF-hand domains and four functional calcium-binding sites. Calcineurin Subunit B Type 1 plays an important role in the T cell activation pathway.

For Research Use Only

A Reliable Research Partner in Life Science and Medicine

Toll-free: 1-888-852-8623

Web: www.elabscience.com

Tel: 1-832-243-6086

Email: techsupport@elabscience.com

Fax: 1-832-243-6017