

# Recombinant Human Calcitonin/CALCA Protein (His Tag)



Catalog Number:PKSH032145

**Note:** Centrifuge before opening to ensure complete recovery of vial contents.

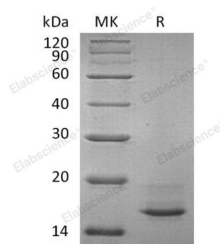
## Description

<b>Synonyms</b>	Calcitonin;Katacalcin;Calcitonin Carboxyl-Terminal Peptide;CCP;PDN-21;CALCA;CALC1
<b>Species</b>	Human
<b>Expression Host</b>	HEK293 Cells
<b>Sequence</b>	Ala26-Asn141
<b>Accession</b>	P01258
<b>Calculated Molecular Weight</b>	13.8 kDa
<b>Observed molecular weight</b>	16 kDa
<b>Tag</b>	C-His

## Properties

<b>Purity</b>	> 90 % as determined by reducing SDS-PAGE.
<b>Endotoxin</b>	< 1.0 EU per µg of the protein as determined by the LAL method.
<b>Storage</b>	Generally, lyophilized proteins are stable for up to 12 months when stored at -20 to -80°C. Reconstituted protein solution can be stored at 4-8°C for 2-7 days. Aliquots of reconstituted samples are stable at < -20°C for 3 months.
<b>Shipping</b>	This product is provided as lyophilized powder which is shipped with ice packs.
<b>Formulation</b>	Lyophilized from a 0.2 µm filtered solution of 20mM PB, 150mM NaCl, pH 7.4. Normally 5 % - 8 % trehalose, mannitol and 0.01% Tween80 are added as protectants before lyophilization. Please refer to the specific buffer information in the printed manual
<b>Reconstitution</b>	Please refer to the printed manual for detailed information.

## Data



> 90 % as determined by reducing SDS-PAGE.

## Background

Calcitonin is a secreted protein which belongs to the calcitonin family. Calcitonin is cleaved into the following two chains: Calcitonin and Katacalcin. Katacalcin is a potent plasma calcium-lowering peptide. Calcitonin is a 32-amino acid linear polypeptide hormone. Calcitonin acts to reduce blood calcium (Ca<sup>2+</sup>); opposing the effects of parathyroid hormone (PTH). Its importance in humans has not been as well established as its importance in other animals; as its function is usually not significant in the regulation of normal calcium homeostasis. Calcitonin causes a rapid but short-lived drop in the level of calcium and phosphate in blood by promoting the incorporation of those ions in the bones.

## For Research Use Only

A Reliable Research Partner in Life Science and Medicine

Toll-free: 1-888-852-8623

Web: [www.elabscience.com](http://www.elabscience.com)

Tel: 1-832-243-6086

Email: [techsupport@elabscience.com](mailto:techsupport@elabscience.com)

Fax: 1-832-243-6017