

Recombinant Human Calcitonin/CALCA Protein (His Tag, E. coli)

Catalog No. PKSH032146

Note: Centrifuge before opening to ensure complete recovery of vial contents.

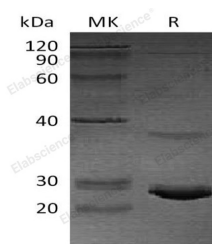
Description

Synonyms	Calcitonin;Katacalcin;Calcitonin Carboxyl-Terminal Peptide;CCP;PDN-21;CALCA;CALC1
Species	Human
Expression Host	E.coli
Sequence	Tyr58-Asn141
Accession	P01258
Calculated Molecular Weight	10.5 kDa
Observed molecular weight	14-20 kDa
Tag	C-His
Bioactivity	Not validated for activity

Properties

Purity	> 90 % as determined by reducing SDS-PAGE.
Endotoxin	< 1.0 EU per µg of the protein as determined by the LAL method.
Storage	Store at < -20°C, stable for 6 months. Please minimize freeze-thaw cycles.
Shipping	This product is provided as liquid. It is shipped at frozen temperature with blue ice/gel packs. Upon receipt, store it immediately at < -20°C.
Formulation	Supplied as a 0.2 µm filtered solution of 20mM PB, 150mM NaCl, 50% Glycerol, pH 7.4.
Reconstitution	Not Applicable

Data



> 90 % as determined by reducing SDS-PAGE.

Background

Calcitonin is a secreted protein which belongs to the calcitonin family. Calcitonin is cleaved into the following two chains: Calcitonin and Katacalcin. Katacalcin is a potent plasma calcium-lowering peptide. Calcitonin is a 32-amino acid linear polypeptide hormone. Calcitonin acts to reduce blood calcium (Ca²⁺); opposing the effects of parathyroid hormone (PTH). Its importance in humans has not been as well established as its importance in other animals; as its function is

For Research Use Only

usually not significant in the regulation of normal calcium homeostasis. Calcitonin causes a rapid but short-lived drop in the level of calcium and phosphate in blood by promoting the incorporation of those ions in the bones.