

Recombinant Human Calmodulin/CALM1 Protein

Catalog Number:PKSH032148



Note: Centrifuge before opening to ensure complete recovery of vial contents.

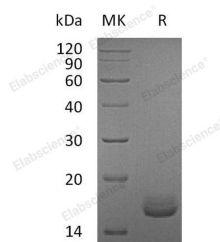
Description

Synonyms	Calmodulin;CaM;CALM1;CALM;CAM;CAM1;CALM2;CAM2;CAMB;CALM3;CALML2;CAM3;CAMC;CAMIII
Species	Human
Expression Host	E.coli
Sequence	Met 1-Lys149
Accession	P0DP23
Calculated Molecular Weight	16.8 kDa
Observed molecular weight	16 kDa
Tag	None

Properties

Purity	> 95 % as determined by reducing SDS-PAGE.
Endotoxin	< 1.0 EU per µg of the protein as determined by the LAL method.
Storage	Generally, lyophilized proteins are stable for up to 12 months when stored at -20 to -80°C. Reconstituted protein solution can be stored at 4-8°C for 2-7 days. Aliquots of reconstituted samples are stable at < -20°C for 3 months.
Shipping	This product is provided as lyophilized powder which is shipped with ice packs.
Formulation	Lyophilized from a 0.2 µm filtered solution of 50mM NH ₄ HCO ₃ , pH 8.0 . Normally 5 % - 8 % trehalose, mannitol and 0.01% Tween80 are added as protectants before lyophilization. Please refer to the specific buffer information in the printed manual.
Reconstitution	Please refer to the printed manual for detailed information.

Data



> 95 % as determined by reducing SDS-PAGE.

Background

Calmodulin (CaM) is a multifunctional intermediate calcium-binding messenger protein expressed in all eukaryotic cells. It is an intracellular target of the secondary messenger Ca²⁺, and the binding of Ca²⁺ is required for the activation of Calmodulin. Once bound to Ca²⁺, Calmodulin acts as part of a calcium signal transduction pathway by modifying its interactions with various target proteins such as kinases or phosphatases. Calmodulin is a small, highly conserved protein that is 148 amino acids long. The protein has two approximately symmetrical globular domains each containing a pair of EF-hand motifs (the N- and C-domain) separated by a flexible linker region for a total of four Ca²⁺ binding sites. Calmodulin mediates many crucial processes such as inflammation, metabolism, apoptosis, smooth muscle contraction,

For Research Use Only

A Reliable Research Partner in Life Science and Medicine

Toll-free: 1-888-852-8623

Web: www.elabscience.com

Tel: 1-832-243-6086

Email: techsupport@elabscience.com

Fax: 1-832-243-6017

Recombinant Human Calmodulin/CALM1 Protein

Catalog Number:PKSH032148



intracellular movement, short-term and long-term memory, and the immune response. Calmodulin is expressed in many cell types and can have different subcellular locations, including the cytoplasm, within organelles, or associated with the plasma or organelle membranes, but it is always found intracellularly.

For Research Use Only

A Reliable Research Partner in Life Science and Medicine

Toll-free: 1-888-852-8623

Tel: 1-832-243-6086

Fax: 1-832-243-6017

Web: www.elabscience.com

Email: techsupport@elabscience.com