

## Recombinant Human Carboxypeptidase E/CPE Protein (His Tag)

Catalog No. PKSH032173

**Note:** Centrifuge before opening to ensure complete recovery of vial contents.

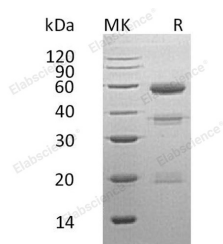
### Description

<b>Synonyms</b>	Carboxypeptidase E(CPE for short);Carboxypeptidase H;Enkephalin convertase;Prohormone-processing carboxypeptidase
<b>Species</b>	Human
<b>Expression Host</b>	HEK293 Cells
<b>Sequence</b>	Arg42-Ser453
<b>Accession</b>	P16870
<b>Calculated Molecular Weight</b>	47.2 kDa
<b>Observed molecular weight</b>	50-60 kDa
<b>Tag</b>	C-His
<b>Bioactivity</b>	Not validated for activity

### Properties

<b>Purity</b>	> 90 % as determined by reducing SDS-PAGE.
<b>Endotoxin</b>	< 1.0 EU per µg of the protein as determined by the LAL method.
<b>Storage</b>	Store at < -20°C, stable for 6 months. Please minimize freeze-thaw cycles.
<b>Shipping</b>	This product is provided as liquid. It is shipped at frozen temperature with blue ice/gel packs. Upon receipt, store it immediately at < -20°C.
<b>Formulation</b>	Supplied as a 0.2 µm filtered solution of 20mM Histidine-HCl, 8% Sucrose, 2% Glycine, 20% Glycerol, 0.05% Tween 80, pH 6.5.
<b>Reconstitution</b>	Not Applicable

### Data



> 90 % as determined by reducing SDS-PAGE.

### Background

The active form of CPE cleaves C-terminal amino acid residues of the peptide, and is thus involved in the biosynthesis of peptide hormones and neurotransmitters including insulin, enkephalin, etc. It is thought that membrane-associated CPE acts as a sorting receptor for targeting regulated secretory proteins which are mostly prohormones and neuropeptides in the trans-Golgi network of the pituitary and in secretory granules into the secretory pathway. Defects in this protein are

### For Research Use Only

implicated in type II diabetes due to impaired glucose clearance and insulin resistance.