

Recombinant Human Carboxypeptidase E/CPE Protein (His Tag)



Catalog Number:PKSH032173

Note: Centrifuge before opening to ensure complete recovery of vial contents.

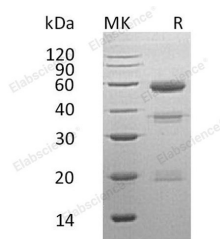
Description

Synonyms	Carboxypeptidase E(CPE for short);Carboxypeptidase H;Enkephalin convertase;Prohormone-processing carboxypeptidase
Species	Human
Expression Host	HEK293 Cells
Sequence	Arg42-Ser453
Accession	P16870
Calculated Molecular Weight	47.2 kDa
Observed molecular weight	50-60 kDa
Tag	C-His

Properties

Purity	> 90 % as determined by reducing SDS-PAGE.
Endotoxin	< 1.0 EU per µg of the protein as determined by the LAL method.
Storage	Store at < -20°C, stable for 6 months. Please minimize freeze-thaw cycles.
Shipping	This product is provided as liquid. It is shipped at frozen temperature with blue ice/gel packs. Upon receipt, store it immediately at < - 20°C.
Formulation	Supplied as a 0.2 µm filtered solution of 20mM Histidine-HCl, 8% Sucrose, 2% Glycine, 20% Glycerol, 0.05% Tween 80, pH 6.5.
Reconstitution	Not Applicable

Data



> 90 % as determined by reducing SDS-PAGE.

Background

The active form of CPE cleaves C-terminal amino acid residues of the peptide, and is thus involved in the biosynthesis of peptide hormones and neurotransmitters including insulin, enkephalin, etc. It is thought that membrane-associated CPE acts as a sorting receptor for targeting regulated secretory proteins which are mostly prohormones and neuropeptides in the trans-Golgi network of the pituitary and in secretory granules into the secretory pathway. Defects in this protein are implicated in type II diabetes due to impaired glucose clearance and insulin resistance.

For Research Use Only

A Reliable Research Partner in Life Science and Medicine

Toll-free: 1-888-852-8623

Web: www.elabscience.com

Tel: 1-832-243-6086

Email: techsupport@elabscience.com

Fax: 1-832-243-6017