

Recombinant Human Carboxypeptidase M/CPM Protein (His Tag)



Catalog Number:PKSH032174

Note: Centrifuge before opening to ensure complete recovery of vial contents.

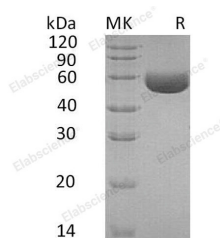
Description

Synonyms	Carboxypeptidase M;CPM
Species	Human
Expression Host	HEK293 Cells
Sequence	Leu18-His422
Accession	P14384
Calculated Molecular Weight	47.3 kDa
Observed molecular weight	55 kDa
Tag	C-His

Properties

Purity	> 95 % as determined by reducing SDS-PAGE.
Endotoxin	< 1.0 EU per µg of the protein as determined by the LAL method.
Storage	Store at < -20°C, stable for 6 months. Please minimize freeze-thaw cycles.
Shipping	This product is provided as liquid. It is shipped at frozen temperature with blue ice/gel packs. Upon receipt, store it immediately at < - 20°C.
Formulation	Supplied as a 0.2 µm filtered solution of 20mM Tris-HCl, 150mM NaCl, 1mM ZnCl ₂ , pH 7.5.
Reconstitution	Not Applicable

Data



> 95 % as determined by reducing SDS-PAGE.

Background

Carboxypeptidase M (CPM) specifically removes C-terminal basic residues (Arg or Lys) from peptides and proteins. Carboxypeptidase exert roles in the physiological processes of blood coagulation/fibrinolysis, inflammation, food digestion and pro-hormone and neuropeptide processing. CPM is believed to play important roles in the control of peptide hormone and growth factor activity at the cell surface, and in the membrane-localized degradation of extracellular proteins. It is widely distributed in a variety of tissues and cells. CPM is involved in peptide metabolism on both the cell surface and in extracellular fluids. CPM functions not only as a protease but also as a binding partner in cell-surface protein-protein interactions.

For Research Use Only

A Reliable Research Partner in Life Science and Medicine

Toll-free: 1-888-852-8623

Web: www.elabscience.com

Tel: 1-832-243-6086

Email: techsupport@elabscience.com

Fax: 1-832-243-6017