

Recombinant Human Cardiotrophin-1/CTF1 Protein (His Tag)



Catalog Number:PKSH032175

Note: Centrifuge before opening to ensure complete recovery of vial contents.

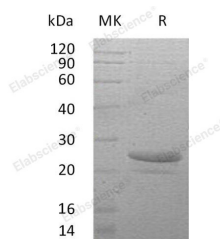
Description

Synonyms	Cardiotrophin-1;CT-1;CTF1;
Species	Human
Expression Host	E.coli
Sequence	Met 1-Ala201
Accession	Q16619
Calculated Molecular Weight	22.6 kDa
Observed molecular weight	25 kDa
Tag	N-His

Properties

Purity	> 95 % as determined by reducing SDS-PAGE.
Endotoxin	< 1.0 EU per µg of the protein as determined by the LAL method.
Storage	Store at < -20°C, stable for 6 months. Please minimize freeze-thaw cycles.
Shipping	This product is provided as liquid. It is shipped at frozen temperature with blue ice/gel packs. Upon receipt, store it immediately at < - 20°C.
Formulation	Supplied as a 0.2 µm filtered solution of PBS, 2mM EDTA, 5% Trehalose, pH 7.4.
Reconstitution	Not Applicable

Data



> 95 % as determined by reducing SDS-PAGE.

Background

Cardiotrophin-1, also known as CT-1 and CTF1, is a member of the IL-6 superfamily. It is a secreted cytokine that is expressed in heart, skeletal muscle, prostate and ovary, and to lower levels in lung, kidney, pancreas, thymus, testis and small intestine. The protein exerts its cellular effects by interacting with the glycoprotein 130 (gp130)/leukemia inhibitory factor receptor beta (LIFR) heterodimer. In addition, CT-1 activates phosphatidylinositol 3-kinase (PI-3 kinase) in cardiac myocytes and enhances transcription factor NF-κB DNA-binding activities.

For Research Use Only

A Reliable Research Partner in Life Science and Medicine

Toll-free: 1-888-852-8623

Web: www.elabscience.com

Tel: 1-832-243-6086

Email: techsupport@elabscience.com

Fax: 1-832-243-6017