

Recombinant Human Cathepsin D/CTSD Protein (His Tag)



Catalog Number:PKSH032180

Note: Centrifuge before opening to ensure complete recovery of vial contents.

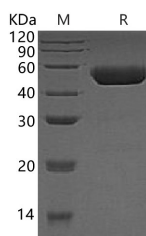
Description

Synonyms	Cathepsin D;CTSD;CLN10;CPSD;HEL-S-130P
Species	Human
Expression Host	HEK293 Cells
Sequence	Leu21-Leu412
Accession	P07339
Calculated Molecular Weight	43.6 kDa
Observed molecular weight	50 kDa
Tag	C-His

Properties

Purity	> 95 % as determined by reducing SDS-PAGE.
Endotoxin	< 1.0 EU per µg of the protein as determined by the LAL method.
Storage	Store at < -20°C, stable for 6 months. Please minimize freeze-thaw cycles.
Shipping	This product is provided as liquid. It is shipped at frozen temperature with blue ice/gel packs. Upon receipt, store it immediately at < - 20°C.
Formulation	Supplied as a 0.2 µm filtered solution of 20mM MES, 150mM NaCl, pH 5.5.
Reconstitution	Not Applicable

Data



> 95 % as determined by reducing SDS-PAGE.

Background

The protein acid protease active in intracellular protein breakdown and involved in the pathogenesis of several diseases such as breast cancer and possibly Alzheimer disease. It is specificity similar to; but narrower than; that of pepsin A and it does not cleave the 4-Gln-I-His-5 bond in B chain of insulin. It consists of a light chain and a heavy chain and expressed in the aorta extracellular space. The Val-58 allele is significantly overrepresented in demented patients (11.8%) compared with non-demented controls (4.9%). Carriers of the Val-58 allele have a 3.1-fold increased risk for developing AD than non-carriers. It belongs to the peptidase A1 family

For Research Use Only

A Reliable Research Partner in Life Science and Medicine

Toll-free: 1-888-852-8623

Web: www.elabscience.com

Tel: 1-832-243-6086

Email: techsupport@elabscience.com

Fax: 1-832-243-6017