

Recombinant Human Cathepsin L2/CTSL2 Protein (His Tag)



Catalog Number:PKSH032183

Note: Centrifuge before opening to ensure complete recovery of vial contents.

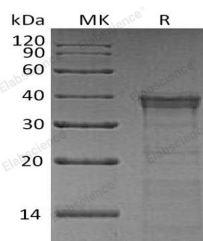
Description

Synonyms	Cathepsin L2;Cathepsin U;Cathepsin V;CTSL2;CATL2;CTSU;CTSV
Species	Human
Expression Host	HEK293 Cells
Sequence	Val18-Val334
Accession	O60911
Calculated Molecular Weight	36.7 kDa
Observed molecular weight	33-43 kDa
Tag	C-His

Properties

Purity	> 95 % as determined by reducing SDS-PAGE.
Endotoxin	< 1.0 EU per µg of the protein as determined by the LAL method.
Storage	Store at < -20°C, stable for 6 months. Please minimize freeze-thaw cycles.
Shipping	This product is provided as liquid. It is shipped at frozen temperature with blue ice/gel packs. Upon receipt, store it immediately at < - 20°C.
Formulation	Supplied as a 0.2 µm filtered solution of 20mM MES, 150mM NaCl, 5% Trehalose, 5% Mannitol, 0.01% Tween80, pH5.5.
Reconstitution	Not Applicable

Data



> 95 % as determined by reducing SDS-PAGE.

Background

Cathepsin L2 belongs to the Peptidase C1 family. Cathepsin L2 can be autocatalytically converted to the mature form as a proenzyme in lysosomes at pH=7.0. Cathepsin L2 cannot be expressed in normal mammary gland, colon and peritumoral tissue, but it can be expressed in breast carcinomas and colorectal tissues. These suggest Cathepsin L2 may play a role in tumor processes. Cathepsin L2 is specifically expressed in the testis, thymus, and corneal epithelium.

For Research Use Only

A Reliable Research Partner in Life Science and Medicine

Toll-free: 1-888-852-8623

Web: www.elabscience.com

Tel: 1-832-243-6086

Email: techsupport@elabscience.com

Fax: 1-832-243-6017