

Recombinant Human CCL16 Protein

Catalog Number:PKSH032188



Note: Centrifuge before opening to ensure complete recovery of vial contents.

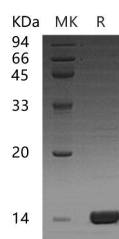
Description

| | |
|------------------------------------|--|
| Synonyms | C-C Motif Chemokine 16;Chemokine CC-4;HCC-4;Chemokine LEC;IL-10-Inducible Chemokine;LCC-1;Liver-Expressed Chemokine;Lymphocyte and Monocyte Chemoattractant;LMC;Monotactin-1;MTN-1;NCC-4;Small-Inducible Cytokine A16;CCL16;ILINCK;NCC4;SCYA16 |
| Species | Human |
| Expression Host | E.coli |
| Sequence | Gln24-Gln120 |
| Accession | O15467 |
| Calculated Molecular Weight | 11.0 kDa |
| Observed molecular weight | 14 kDa |
| Tag | None |

Properties

| | |
|-----------------------|--|
| Purity | > 95 % as determined by reducing SDS-PAGE. |
| Endotoxin | < 1.0 EU per µg of the protein as determined by the LAL method. |
| Storage | Generally, lyophilized proteins are stable for up to 12 months when stored at -20 to -80°C. Reconstituted protein solution can be stored at 4-8°C for 2-7 days. Aliquots of reconstituted samples are stable at < -20°C for 3 months. |
| Shipping | This product is provided as lyophilized powder which is shipped with ice packs. |
| Formulation | Lyophilized from a 0.2 µm filtered solution of 20mM PB, 150mM NaCl, pH 7.4. Normally 5 % - 8 % trehalose, mannitol and 0.01% Tween80 are added as protectants before lyophilization. Please refer to the specific buffer information in the printed man |
| Reconstitution | Please refer to the printed manual for detailed information. |

Data



> 95 % as determined by reducing SDS-PAGE.

Background

CCL16 is a member of CC chemokine family. CCL16 cDNA encodes a 120 amino acid peptide along with a 23 amino acids signal peptide that is cleaved to generate 97 amino acid protein. CCL16 is distantly related to other CC chemokines, showing less than 30% sequence identity. CCL16 elicits its effects on cells by interacting with cell surface chemokine receptors such as CCR1, CCR2, CCR5 and CCR8. Recombinant CCL16 has been shown to chemoattract human monocytes and THP1 cells but not resting lymphocytes nor neutrophils. CCL16 has potent myelosuppressive activity,

For Research Use Only

A Reliable Research Partner in Life Science and Medicine

Toll-free: 1-888-852-8623

Web: www.elabscience.com

Tel: 1-832-243-6086

Email: techsupport@elabscience.com

Fax: 1-832-243-6017

Recombinant Human CCL16 Protein

Catalog Number:PKSH032188



suppresses proliferation of myeloid progenitor cells. CCL16 induces a calcium flux in THP1 cells that can be desensitized by prior exposure to RANTES, suggesting that CCL16 and RANTES share the same receptor in THP1 cells.

For Research Use Only

A Reliable Research Partner in Life Science and Medicine

Toll-free: 1-888-852-8623

Tel: 1-832-243-6086

Fax: 1-832-243-6017

Web: www.elabscience.com

Email: techsupport@elabscience.com