

Recombinant Human CCL18 Protein (His Tag)

Catalog Number:PKSH032189



Note: Centrifuge before opening to ensure complete recovery of vial contents.

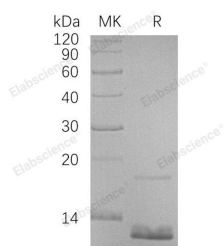
Description

Synonyms	C-C Motif Chemokine 18;Alternative Macrophage Activation-Associated CC Chemokine 1;AMAC-1;CC Chemokine PARC;Dendritic Cell Chemokine 1;DC-CK1;Macrophage Inflammatory Protein 4;MIP-4;Pulmonary and Activation-Regulated Chemokine;Small-Inducible Cytokine A18;CCL18;AMAC1;DCCK1;MIP4;PARC;SCYA18
Species	Human
Expression Host	E.coli
Sequence	Ala21-Ala89
Accession	P55774
Calculated Molecular Weight	10.1 kDa
Observed molecular weight	13 kDa
Tag	N-His

Properties

Purity	> 95 % as determined by reducing SDS-PAGE.
Endotoxin	< 1.0 EU per µg of the protein as determined by the LAL method.
Storage	Generally, lyophilized proteins are stable for up to 12 months when stored at -20 to -80°C. Reconstituted protein solution can be stored at 4-8°C for 2-7 days. Aliquots of reconstituted samples are stable at < -20°C for 3 months.
Shipping	This product is provided as lyophilized powder which is shipped with ice packs.
Formulation	Lyophilized from a 0.2 µm filtered solution of 20mM Citrate, 6% Trehalose, 4% Mannitol, 0.05% Tween 80, pH 4.0. Normally 5 % - 8 % trehalose, mannitol and 0.01% Tween80 are added as protectants before lyophilization. Please refer to the specific b
Reconstitution	Please refer to the printed manual for detailed information.

Data



> 95 % as determined by reducing SDS-PAGE.

Background

C-C Motif Chemokine 18 (CCL18) is secreted protein that belongs to the intercrine beta (chemokine CC) family. CCL18 is expressed at high levels in the lung, lymph nodes, placenta, bone marrow, and dendritic cells. CCL18 is a chemotactic factor that attracts lymphocytes but not monocytes or granulocytes. CCL18 may be involved in B-cell migration into B-

For Research Use Only

A Reliable Research Partner in Life Science and Medicine

Toll-free: 1-888-852-8623

Web: www.elabscience.com

Tel: 1-832-243-6086

Email: techsupport@elabscience.com

Fax: 1-832-243-6017

Recombinant Human CCL18 Protein (His Tag)

Catalog Number:PKSH032189



cell follicles in lymph nodes. CCL18 attracts naive T-lymphocytes toward dendritic cells and activated macrophages in lymph nodes. It has chemotactic activity for naive T-cells, CD4+ and CD8+ T-cells and thus may play a role in both humoral and cell-mediated immunity responses.

For Research Use Only

A Reliable Research Partner in Life Science and Medicine

Toll-free: 1-888-852-8623

Web: www.elabscience.com

Tel: 1-832-243-6086

Email: techsupport@elabscience.com

Fax: 1-832-243-6017