

Recombinant Human CCL8/MCP-2 Protein (Human Cells, His Tag)



Catalog Number:PKSH032202

Note: Centrifuge before opening to ensure complete recovery of vial contents.

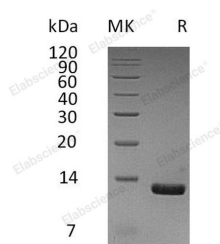
Description

Synonyms	C-C Motif Chemokine 8;HC14;Monocyte Chemoattractant Protein 2;Monocyte Chemotactic Protein 2;MCP-2;Small-Inducible Cytokine A8;CCL8;MCP2;SCYA10;SCYA8;HC14
Species	Human
Expression Host	HEK293 Cells
Sequence	Gln24-Pro99
Accession	AAI26243.1
Calculated Molecular Weight	10.0 kDa
Observed molecular weight	13 kDa
Tag	C-His

Properties

Purity	> 95 % as determined by reducing SDS-PAGE.
Endotoxin	< 1.0 EU per µg of the protein as determined by the LAL method.
Storage	Generally, lyophilized proteins are stable for up to 12 months when stored at -20 to -80°C. Reconstituted protein solution can be stored at 4-8°C for 2-7 days. Aliquots of reconstituted samples are stable at < -20°C for 3 months.
Shipping	This product is provided as lyophilized powder which is shipped with ice packs.
Formulation	Lyophilized from a 0.2 µm filtered solution of 20mM PB, 150mM NaCl, 1mM EDTA, pH 7.4. Normally 5 % - 8 % trehalose, mannitol and 0.01% Tween80 are added as protectants before lyophilization. Please refer to the specific buffer information in the p
Reconstitution	Please refer to the printed manual for detailed information.

Data



> 95 % as determined by reducing SDS-PAGE.

Background

Human Chemokine (C-C Motif) Ligand 8 (CCL8) is produced by human MG63 osteosarcoma cells. CCL8 shares 62% and 58% amino acid sequence identity with MCP-1 and MCP-3; respectively. All three MCP proteins are monocyte chemoattractants. CCL8 is chemotactic for and activates many different immune cells; including mast cells; eosinophils and basophils; which are implicated in allergic response; and monocytes; T cells; and NK cells that are involved in the inflammatory response. CCL8 elicits its effects by binding to several different cell surface receptors including CCR1;

For Research Use Only

A Reliable Research Partner in Life Science and Medicine

Toll-free: 1-888-852-8623

Web: www.elabscience.com

Tel: 1-832-243-6086

Email: techsupport@elabscience.com

Fax: 1-832-243-6017

Recombinant Human CCL8/MCP-2 Protein (Human Cells, His Tag)



Catalog Number:PKSH032202

CCR2B and CCR5.

For Research Use Only

A Reliable Research Partner in Life Science and Medicine

Toll-free: 1-888-852-8623

Tel: 1-832-243-6086

Fax: 1-832-243-6017

Web: www.elabscience.com

Email: techsupport@elabscience.com