

Recombinant Human CD200R1 Protein (Fc Tag)

Catalog Number:PKSH032207



Note: Centrifuge before opening to ensure complete recovery of vial contents.

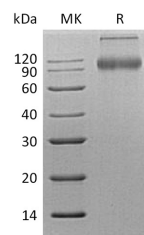
Description

Synonyms	Cell Surface Glycoprotein CD200 Receptor 1;CD200 Cell Surface Glycoprotein Receptor;Cell Surface Glycoprotein OX2 Receptor 1;CD200R1;CD200R;CRTR2;MOX2R;OX2R
Species	Human
Expression Host	HEK293 Cells
Sequence	Ala27-Leu266
Accession	Q8TD46
Calculated Molecular Weight	53.9 kDa
Observed molecular weight	70-105 kDa
Tag	C-Fc

Properties

Purity	> 95 % as determined by reducing SDS-PAGE.
Endotoxin	< 1.0 EU per µg of the protein as determined by the LAL method.
Storage	Generally, lyophilized proteins are stable for up to 12 months when stored at -20 to -80°C. Reconstituted protein solution can be stored at 4-8°C for 2-7 days. Aliquots of reconstituted samples are stable at < -20°C for 3 months.
Shipping	This product is provided as lyophilized powder which is shipped with ice packs.
Formulation	Lyophilized from a 0.2 µm filtered solution of 20mM PB, 150mM NaCl, pH 7.4. Normally 5 % - 8 % trehalose, mannitol and 0.01% Tween80 are added as protectants before lyophilization. Please refer to the specific buffer information in the printed man
Reconstitution	Please refer to the printed manual for detailed information.

Data



> 95 % as determined by reducing SDS-PAGE.

Background

Cell surface glycoprotein CD200 Receptor 1 (CD200R1) is the receptor for the CD200 (OX-2) membrane glycoprotein. CD200R1 contains one C2- type Ig-like domain and one V-type Ig-like domain within its extracellular domain and a PTB-signaling motif in cytoplasmic domain. CD200R1 and CD200 associate via their respective N-terminal Ig-like domains. CD200R1 is restricted primarily to mast cells, basophils, macrophages, and dendritic cells. It propagates inhibitory signals despite its lacking a cytoplasmic ITIM (immunoreceptor tyrosinebased inhibitory motif). The receptor-substrate interaction may function as a myeloid downregulatory signal.

For Research Use Only

A Reliable Research Partner in Life Science and Medicine

Toll-free: 1-888-852-8623

Web: www.elabscience.com

Tel: 1-832-243-6086

Email: techsupport@elabscience.com

Fax: 1-832-243-6017