

## Recombinant Human CD30/TNFRSF8 Protein (Fc Tag)

**Catalog No.** PKSH032213

**Note:** Centrifuge before opening to ensure complete recovery of vial contents.

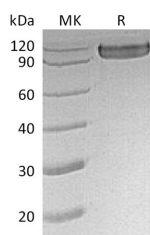
### Description

<b>Synonyms</b>	Tumor necrosis factor receptor superfamily member 8;CD30L receptor;Ki-1 antigen;Lymphocyte activation antigen CD30;CD30;TNFRSF8;D1S166E
<b>Species</b>	Human
<b>Expression Host</b>	HEK293 Cells
<b>Sequence</b>	Phe19-Lys379
<b>Accession</b>	P28908
<b>Calculated Molecular Weight</b>	65.2 kDa
<b>Observed molecular weight</b>	90-120 kDa
<b>Tag</b>	C-Fc
<b>Bioactivity</b>	Not validated for activity

### Properties

<b>Purity</b>	> 95 % as determined by reducing SDS-PAGE.
<b>Endotoxin</b>	< 1.0 EU per µg of the protein as determined by the LAL method.
<b>Storage</b>	Generally, lyophilized proteins are stable for up to 12 months when stored at -20 to -80°C. Reconstituted protein solution can be stored at 4-8°C for 2-7 days. Aliquots of reconstituted samples are stable at < -20°C for 3 months.
<b>Shipping</b>	This product is provided as lyophilized powder which is shipped with ice packs.
<b>Formulation</b>	Lyophilized from a 0.2 µm filtered solution of PBS, pH 7.4. Normally 5 % - 8 % trehalose, mannitol and 0.01% Tween80 are added as protectants before lyophilization. Please refer to the specific buffer information in the printed manual.
<b>Reconstitution</b>	Please refer to the printed manual for detailed information.

### Data



> 95 % as determined by reducing SDS-PAGE.

### Background

CD30; also known as TNFRSF8; is a cell membrane protein of the tumor necrosis factor receptor family; which regulates

### For Research Use Only

proliferation/apoptosis and antibody responses. CD30 is expressed by activated; but not by resting; T and B cells. Aberrant expression of CD30 by mastocytosis mast cells and interaction with its ligand CD30L (CD153) appears to play an important role in the pathogenesis and clinical presentation of systemic mastocytosis. CD30 has been considered as a specific diagnostic biomarker of anaplastic large cell lymphoma (ALCL) and classical Hodgkin lymphoma (cHL). CD30 is also a biomarker used for targeted therapy by an antibody–drug conjugate.