

Recombinant Human CEACAM8/CD66b Protein (His Tag)



Catalog Number:PKSH032239

Note: Centrifuge before opening to ensure complete recovery of vial contents.

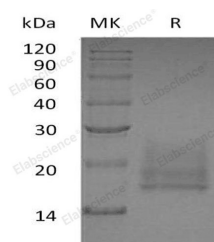
Description

| | |
|------------------------------------|--|
| Synonyms | Carcinoembryonic Antigen-Related Cell Adhesion Molecule 8;CD67 Antigen;Carcinoembryonic Antigen CGM6;Non-Specific Cross-Reacting Antigen NCA-95;CD66b;CEACAM8;CGM6 |
| Species | Human |
| Expression Host | HEK293 Cells |
| Sequence | Gln35-His141 |
| Accession | P31997 |
| Calculated Molecular Weight | 13.0 kDa |
| Observed molecular weight | 17-25 kDa |
| Tag | C-His |

Properties

| | |
|-----------------------|--|
| Purity | > 95 % as determined by reducing SDS-PAGE. |
| Endotoxin | < 1.0 EU per µg of the protein as determined by the LAL method. |
| Storage | Generally, lyophilized proteins are stable for up to 12 months when stored at -20 to -80°C. Reconstituted protein solution can be stored at 4-8°C for 2-7 days. Aliquots of reconstituted samples are stable at < -20°C for 3 months. |
| Shipping | This product is provided as lyophilized powder which is shipped with ice packs. |
| Formulation | Lyophilized from a 0.2 µm filtered solution of 20mM PB, 150mM NaCl, pH 7.4. Normally 5 % - 8 % trehalose, mannitol and 0.01% Tween80 are added as protectants before lyophilization. Please refer to the specific buffer information in the printed man |
| Reconstitution | Please refer to the printed manual for detailed information. |

Data



> 95 % as determined by reducing SDS-PAGE.

Background

Carcinoembryonic Antigen-Related Cell Adhesion Molecule 8 (CEACAM8) is a single chain, GPI-anchored, highly glycosylated protein which belongs to the immunoglobulin superfamily and the carcinoembryonic antigen(CEA) family. CEACAM8 is expressed by neutrophils and eosinophils, and serves as a binding partner for CEACAM-6 and Galectin-3. It contains two Ig-like C2-type (immunoglobulin-like) domains and one Ig-like V-type (immunoglobulin-like) domain. Mature human CEACAM8 is a 287 amino acid GPI-linked glycoprotein. CEACAM family members are a set of widely expressed proteins involved in several biological functions, including cell adhesion, migration, signal transduction, and the

For Research Use Only

A Reliable Research Partner in Life Science and Medicine

Toll-free: 1-888-852-8623

Web: www.elabscience.com

Tel: 1-832-243-6086

Email: techsupport@elabscience.com

Fax: 1-832-243-6017

Recombinant Human CEACAM8/CD66b Protein (His Tag)

Catalog Number:PKSH032239

DIA • AN®
by Elabscience

regulation of gene expression. Abnormal overexpression and downregulation of some CEACAMs have been described in tumor cells.

For Research Use Only

A Reliable Research Partner in Life Science and Medicine

Toll-free: 1-888-852-8623

Tel: 1-832-243-6086

Fax: 1-832-243-6017

Web: www.elabscience.com

Email: techsupport@elabscience.com