

Recombinant Human Chitotriosidase/CHIT1 Protein (His Tag)

Catalog No. PKSH032245

Note: Centrifuge before opening to ensure complete recovery of vial contents.

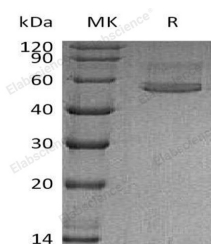
Description

Synonyms	Chitotriosidase-1;Chitinase-1;CHIT1;CHI3;CHIT;CHITD
Species	Human
Expression Host	HEK293 Cells
Sequence	Ala22-Asn466
Accession	AAI03696.1
Calculated Molecular Weight	50.4 kDa
Observed molecular weight	54 kDa
Tag	C-His
Bioactivity	Not validated for activity

Properties

Purity	> 95 % as determined by reducing SDS-PAGE.
Endotoxin	< 1.0 EU per µg of the protein as determined by the LAL method.
Storage	Store at < -20°C, stable for 6 months. Please minimize freeze-thaw cycles.
Shipping	This product is provided as liquid. It is shipped at frozen temperature with blue ice/gel packs. Upon receipt, store it immediately at < -20°C.
Formulation	Supplied as a 0.2 µm filtered solution of 20mM Tris-HCl, 150mM NaCl, pH 7.5.
Reconstitution	Not Applicable

Data



> 95 % as determined by reducing SDS-PAGE.

Background

Chitotriosidase-1 (CHIT1) is a glycoprotein that belongs to the Glycosyl Hydrolase 18 family and Chitinase class II subfamily. It is secreted by cultured macrophages and serves to degrade chitin, chitotriose and chitobiose. CHIT1 may participate in the defense against nematodes and other pathogens. It is highly expressed in the plasma of patients with Gaucher's disease type I, which can be used as diagnostic aid and to evaluate the success of treatment that brings levels back to normal. The amino acid sequence of human CHIT1 is 99%, 76%, 75% and 55% identical to that of chimpanzee, rat, mouse and fruit fly, respectively.

For Research Use Only