

# Recombinant Human Chitotriosidase/CHIT1 Protein (His Tag)



Catalog Number:PKSH032245

**Note:** Centrifuge before opening to ensure complete recovery of vial contents.

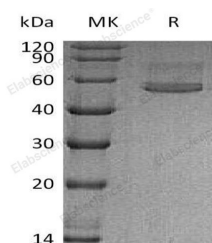
## Description

<b>Synonyms</b>	Chitotriosidase-1;Chitinase-1;CHIT1;CHI3;CHIT;CHITD
<b>Species</b>	Human
<b>Expression Host</b>	HEK293 Cells
<b>Sequence</b>	Ala22-Asn466
<b>Accession</b>	AAI03696.1
<b>Calculated Molecular Weight</b>	50.4 kDa
<b>Observed molecular weight</b>	54 kDa
<b>Tag</b>	C-His

## Properties

<b>Purity</b>	> 95 % as determined by reducing SDS-PAGE.
<b>Endotoxin</b>	< 1.0 EU per µg of the protein as determined by the LAL method.
<b>Storage</b>	Store at < -20°C, stable for 6 months. Please minimize freeze-thaw cycles.
<b>Shipping</b>	This product is provided as liquid. It is shipped at frozen temperature with blue ice/gel packs. Upon receipt, store it immediately at < - 20°C.
<b>Formulation</b>	Supplied as a 0.2 µm filtered solution of 20mM Tris-HCl, 150mM NaCl, pH 7.5.
<b>Reconstitution</b>	Not Applicable

## Data



> 95 % as determined by reducing SDS-PAGE.

## Background

Chitotriosidase-1 (CHIT1) is a glycoprotein that belongs to the Glycosyl Hydrolase 18 family and Chitinase class II subfamily. It is secreted by cultured macrophages and serves to degrade chitin, chitotriose and chitobiose. CHIT1 may participate in the defense against nematodes and other pathogens. It is highly expressed in the plasma of patients with Gaucher's disease type I, which can be used as diagnostic aid and to evaluate the success of treatment that brings levels back to normal. The amino acid sequence of human CHIT1 is 99%, 76%, 75% and 55% identical to that of chimpanzee, rat, mouse and fruit fly, respectively.

## For Research Use Only

A Reliable Research Partner in Life Science and Medicine

Toll-free: 1-888-852-8623

Web: [www.elabscience.com](http://www.elabscience.com)

Tel: 1-832-243-6086

Email: [techsupport@elabscience.com](mailto:techsupport@elabscience.com)

Fax: 1-832-243-6017