

Recombinant Human CLIC3 Protein (His Tag)

Catalog Number:PKSH032248



Note: Centrifuge before opening to ensure complete recovery of vial contents.

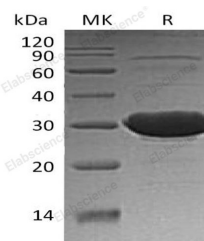
Description

Synonyms	Chloride intracellular channel protein 3;CLIC3;
Species	Human
Expression Host	E.coli
Sequence	Met 1-Arg236
Accession	O95833
Calculated Molecular Weight	27.7 kDa
Observed molecular weight	30 kDa
Tag	C-His

Properties

Purity	> 95 % as determined by reducing SDS-PAGE.
Endotoxin	< 1.0 EU per µg of the protein as determined by the LAL method.
Storage	Store at < -20°C, stable for 6 months. Please minimize freeze-thaw cycles.
Shipping	This product is provided as liquid. It is shipped at frozen temperature with blue ice/gel packs. Upon receipt, store it immediately at < - 20°C.
Formulation	Supplied as a 0.2 µm filtered solution of 20mM Tris-HCl, 200mM Sucrose, 0.05% Tween 80 (w/v), pH 8.5.
Reconstitution	Not Applicable

Data



> 95 % as determined by reducing SDS-PAGE.

Background

Chloride intracellular channel protein 3 (CLIC3) is encoded by the CLIC3 gene. CLIC3 is a single-pass membrane protein which belongs to the chloride channel CLIC family. It contains one GST C-terminal domain and one GST N-terminal domain. Chloride intracellular channel protein 3 high expressed in the placental, lung and heart, low expressed in skeletal muscle, kidney and pancreas. Chloride intracellular channel protein 3 can insert into membranes and forms chloride ion channels, may participate in cellular growth control.

For Research Use Only

A Reliable Research Partner in Life Science and Medicine

Toll-free: 1-888-852-8623

Web: www.elabscience.com

Tel: 1-832-243-6086

Email: techsupport@elabscience.com

Fax: 1-832-243-6017