

Recombinant Human CELA3A Protein (His Tag)

Catalog No. PKSH032252

Note: Centrifuge before opening to ensure complete recovery of vial contents.

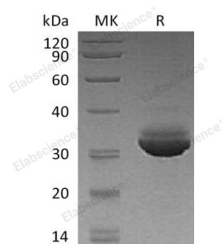
Description

Synonyms	Chymotrypsin-Like Elastase Family Member 3A;Elastase IIIA;Elastase-3A;Protease E;CELA3A;ELA3;ELA3A
Species	Human
Expression Host	HEK293 Cells
Sequence	Ser16-His270
Accession	AAH07028.1
Calculated Molecular Weight	28.9 kDa
Observed molecular weight	31 kDa
Tag	C-His
Bioactivity	Not validated for activity

Properties

Purity	> 95 % as determined by reducing SDS-PAGE.
Endotoxin	< 1.0 EU per µg of the protein as determined by the LAL method.
Storage	Store at < -20°C, stable for 6 months. Please minimize freeze-thaw cycles.
Shipping	This product is provided as liquid. It is shipped at frozen temperature with blue ice/gel packs. Upon receipt, store it immediately at < -20°C.
Formulation	Supplied as a 0.2 µm filtered solution of 20mM Tris-HCl, 150mM NaCl, 10% Glycerol, pH 7.5.
Reconstitution	Not Applicable

Data



> 95 % as determined by reducing SDS-PAGE.

Background

Chymotrypsin-Like Elastase Family Member 3A (CELA3A) is an enzyme that contains one peptidase S1 domain. ELA3A belongs to the peptidase S1 family of the Elastase subfamily. ELA3A is secreted from the pancreas as a zymogen and, like other serine proteases such as trypsin, chymotrypsin and kallikrein, it has a digestive function in the intestine. ELA3A may also function in the intestinal transport and metabolism of cholesterol. ELA3A is efficient protease with

For Research Use Only

alanine specificity but only little elastolytic activity. ELA3A preferentially cleaves proteins after alanine residues.

For Research Use Only

Toll-free: 1-888-852-8623

Web: www.elabscience.com

Tel: 1-832-243-6086

Email: techsupport@elabscience.com

Fax: 1-832-243-6017