

# Recombinant Human CELA3A Protein (His Tag)

Catalog Number:PKSH032252



**Note:** Centrifuge before opening to ensure complete recovery of vial contents.

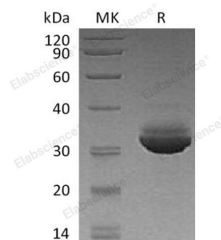
## Description

<b>Synonyms</b>	Chymotrypsin-Like Elastase Family Member 3A;Elastase IIIA;Elastase-3A;Protease E;CELA3A;ELA3;ELA3A
<b>Species</b>	Human
<b>Expression Host</b>	HEK293 Cells
<b>Sequence</b>	Ser16-His270
<b>Accession</b>	AAH07028.1
<b>Calculated Molecular Weight</b>	28.9 kDa
<b>Observed molecular weight</b>	31 kDa
<b>Tag</b>	C-His

## Properties

<b>Purity</b>	> 95 % as determined by reducing SDS-PAGE.
<b>Endotoxin</b>	< 1.0 EU per µg of the protein as determined by the LAL method.
<b>Storage</b>	Store at < -20°C, stable for 6 months. Please minimize freeze-thaw cycles.
<b>Shipping</b>	This product is provided as liquid. It is shipped at frozen temperature with blue ice/gel packs. Upon receipt, store it immediately at < - 20°C.
<b>Formulation</b>	Supplied as a 0.2 µm filtered solution of 20mM Tris-HCl, 150mM NaCl, 10% Glycerol, pH 7.5.
<b>Reconstitution</b>	Not Applicable

## Data



> 95 % as determined by reducing SDS-PAGE.

## Background

Chymotrypsin-Like Elastase Family Member 3A (CELA3A) is an enzyme that contains one peptidase S1 domain. ELA3A belongs to the peptidase S1 family of the Elastase subfamily. ELA3A is secreted from the pancreas as a zymogen and, like other serine proteases such as trypsin, chymotrypsin and kallikrein, it has a digestive function in the intestine. ELA3A may also function in the intestinal transport and metabolism of cholesterol. ELA3A is efficient protease with alanine specificity but only little elastolytic activity. ELA3A preferentially cleaves proteins after alanine residues.

## For Research Use Only

A Reliable Research Partner in Life Science and Medicine

Toll-free: 1-888-852-8623

Web: [www.elabscience.com](http://www.elabscience.com)

Tel: 1-832-243-6086

Email: [techsupport@elabscience.com](mailto:techsupport@elabscience.com)

Fax: 1-832-243-6017