

# Recombinant Human CTRL Protein (His Tag)

Catalog Number:PKSH032253



**Note:** Centrifuge before opening to ensure complete recovery of vial contents.

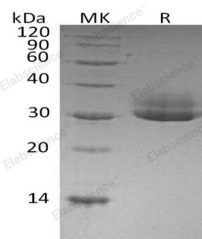
## Description

<b>Synonyms</b>	Chymotrypsin-Like Protease CTRL-1;CTRL;CTRL1
<b>Species</b>	Human
<b>Expression Host</b>	HEK293 Cells
<b>Sequence</b>	Cys19-Asn264
<b>Accession</b>	P40313
<b>Calculated Molecular Weight</b>	27.2 kDa
<b>Observed molecular weight</b>	28-38 kDa
<b>Tag</b>	C-His

## Properties

<b>Purity</b>	> 95 % as determined by reducing SDS-PAGE.
<b>Endotoxin</b>	< 1.0 EU per µg of the protein as determined by the LAL method.
<b>Storage</b>	Store at < -20°C, stable for 6 months. Please minimize freeze-thaw cycles.
<b>Shipping</b>	This product is provided as liquid. It is shipped at frozen temperature with blue ice/gel packs. Upon receipt, store it immediately at < - 20°C.
<b>Formulation</b>	Supplied as a 0.2 µm filtered solution of 20mM Tris-HCl, 150mM NaCl, 10% Glycerol, pH 8.0.
<b>Reconstitution</b>	Not Applicable

## Data



> 95 % as determined by reducing SDS-PAGE.

## Background

Chymotrypsin-Like Protease CTRL-1 is a protease that belongs to the peptidase S1 family. Human CTRL-1 is synthesized as a 264 amino acid (aa) precursor that contains an 18 aa signal sequence, 15 aa activation peptide and a 231 aa mature chain. CTRL-1 Contains 1 peptidase S1 domain. It has many molecular functions, such as hydrolase, protease, and serine protease. CTRL-1 plays a role in digest and hydrolyze proteins in biological process.

## For Research Use Only

A Reliable Research Partner in Life Science and Medicine

Toll-free: 1-888-852-8623

Web: [www.elabscience.com](http://www.elabscience.com)

Tel: 1-832-243-6086

Email: [techsupport@elabscience.com](mailto:techsupport@elabscience.com)

Fax: 1-832-243-6017