

Recombinant Human Chymotrypsinogen B/CTRB1 Protein (His Tag)

Catalog No. PKSH032254

Note: Centrifuge before opening to ensure complete recovery of vial contents.

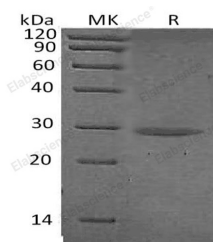
Description

| | |
|------------------------------------|-------------------------------|
| Synonyms | Chymotrypsinogen B;CTRB1;CTRB |
| Species | Human |
| Expression Host | HEK293 Cells |
| Sequence | Cys19-Asn263 |
| Accession | P17538 |
| Calculated Molecular Weight | 26.9 kDa |
| Observed molecular weight | 28 kDa |
| Tag | C-His |
| Bioactivity | Not validated for activity |

Properties

| | |
|-----------------------|-------------------------------------------------------------------------------------------------------------------------------------------------|
| Purity | > 95 % as determined by reducing SDS-PAGE. |
| Endotoxin | < 1.0 EU per µg of the protein as determined by the LAL method. |
| Storage | Store at < -20°C, stable for 6 months. Please minimize freeze-thaw cycles. |
| Shipping | This product is provided as liquid. It is shipped at frozen temperature with blue ice/gel packs. Upon receipt, store it immediately at < -20°C. |
| Formulation | Supplied as a 0.2 µm filtered solution of 20mM Tris-HCl, 150mM NaCl, pH 8.0. |
| Reconstitution | Not Applicable |

Data



> 95 % as determined by reducing SDS-PAGE.

Background

Chymotrypsinogen B (CTRB1) is a 263 amino acid protein with signal peptide (1-18) and Chymotrypsinogen B (19-263). Chymotrypsinogen B have three chains:Chymotrypsin B chain A(19-31), Chymotrypsin B chain B(34-164), Chymotrypsin B chain C (167-263). Chymotrypsinogen B is a Serine Protease Hydrolase secrets into gastrointestinal tract as the inactive precursor Chymotrypsinogen.

For Research Use Only