

Recombinant Human Chymotrypsinogen B/CTRB1 Protein (His Tag)



Catalog Number:PKSH032254

Note: Centrifuge before opening to ensure complete recovery of vial contents.

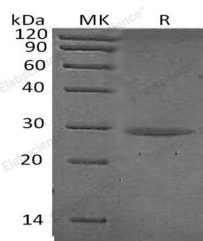
Description

Synonyms	Chymotrypsinogen B;CTRB1;CTRB
Species	Human
Expression Host	HEK293 Cells
Sequence	Cys19-Asn263
Accession	P17538
Calculated Molecular Weight	26.9 kDa
Observed molecular weight	28 kDa
Tag	C-His

Properties

Purity	> 95 % as determined by reducing SDS-PAGE.
Endotoxin	< 1.0 EU per µg of the protein as determined by the LAL method.
Storage	Store at < -20°C, stable for 6 months. Please minimize freeze-thaw cycles.
Shipping	This product is provided as liquid. It is shipped at frozen temperature with blue ice/gel packs. Upon receipt, store it immediately at < - 20°C.
Formulation	Supplied as a 0.2 µm filtered solution of 20mM Tris-HCl, 150mM NaCl, pH 8.0.
Reconstitution	Not Applicable

Data



> 95 % as determined by reducing SDS-PAGE.

Background

Chymotrypsinogen B (CTRB1) is a 263 amino acid protein with signal peptide (1-18) and Chymotrypsinogen B (19-263). Chymotrypsinogen B have three chains:Chymotrypsin B chain A(19-31), Chymotrypsin B chain B(34-164), Chymotrypsin B chain C (167-263). Chymotrypsinogen B is a Serine Protease Hydrolase secretes into gastrointestinal tract as the inactive precursor Chymotrypsinogen.

For Research Use Only

A Reliable Research Partner in Life Science and Medicine

Toll-free: 1-888-852-8623

Web: www.elabscience.com

Tel: 1-832-243-6086

Email: techsupport@elabscience.com

Fax: 1-832-243-6017